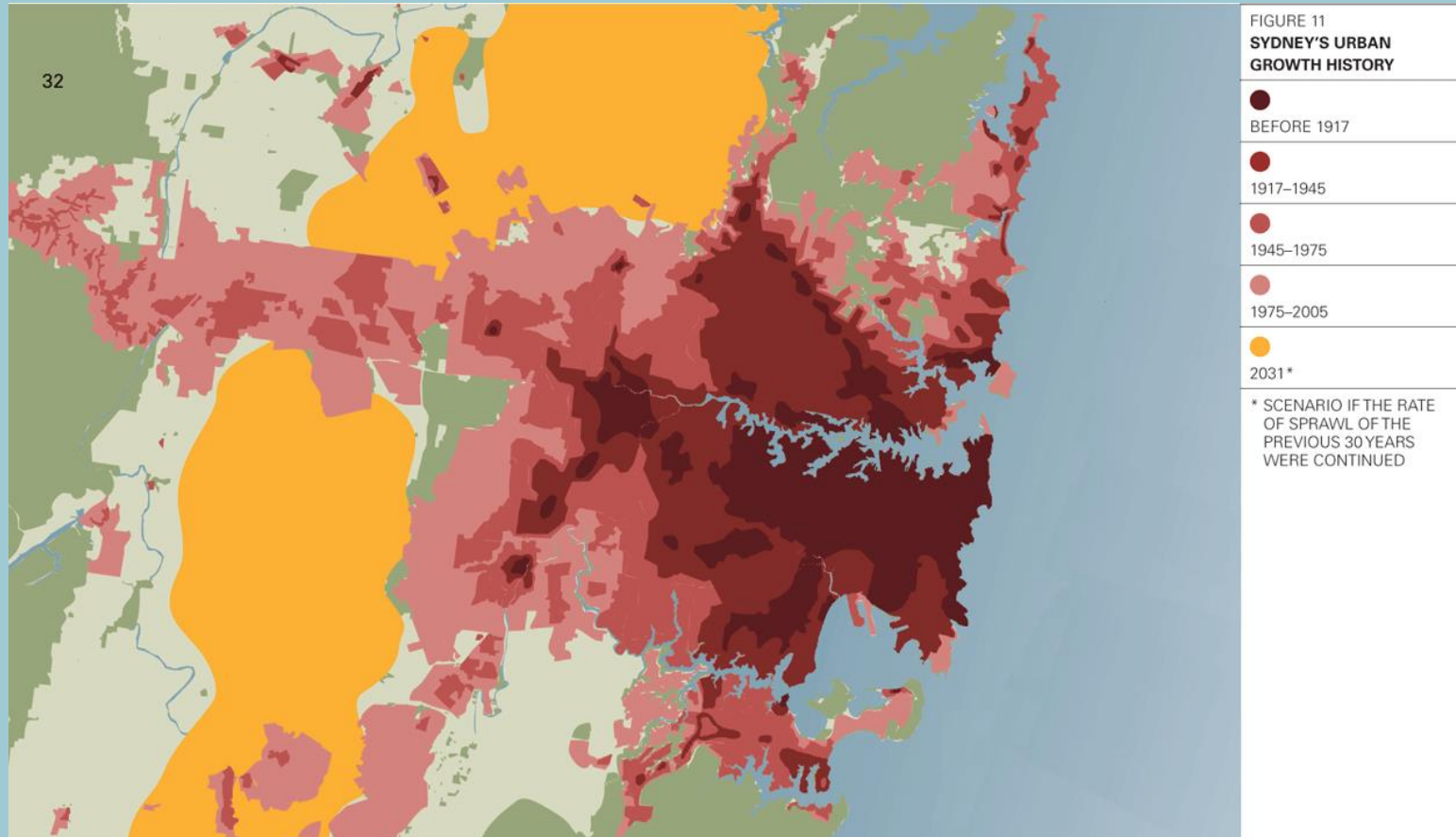


Sydney in the Regional Context

PIA Joining the Dots



Michael Fox
MFA Architects & Planners / PIA Transport Network
www.michaelfoxarchitects.com

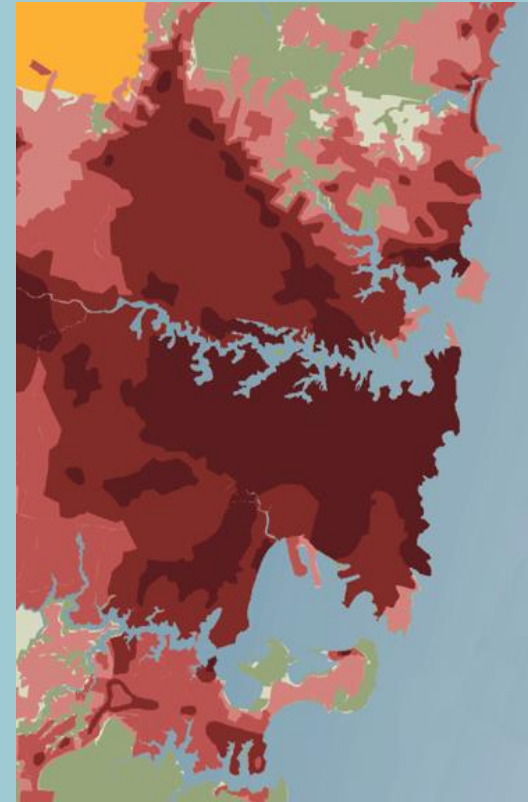
Sydney in the Regional Context

Key issues

Land Use & Transport

Population & Density
Water & Quality of Life

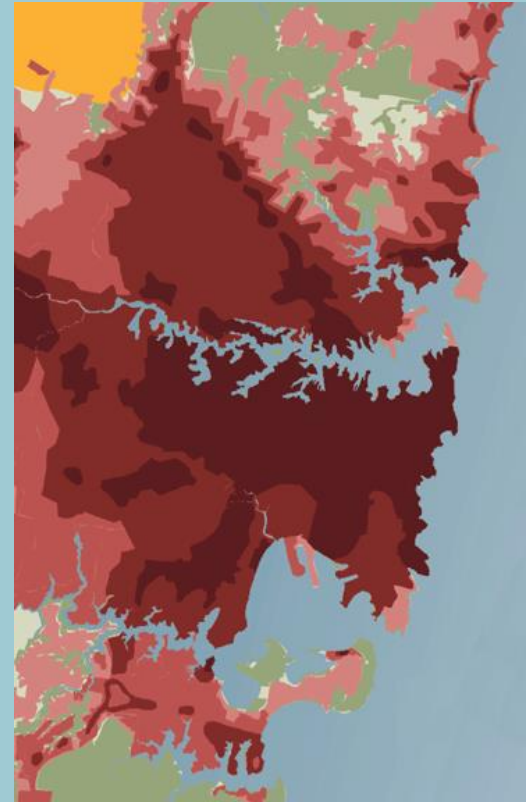
Regional strategy



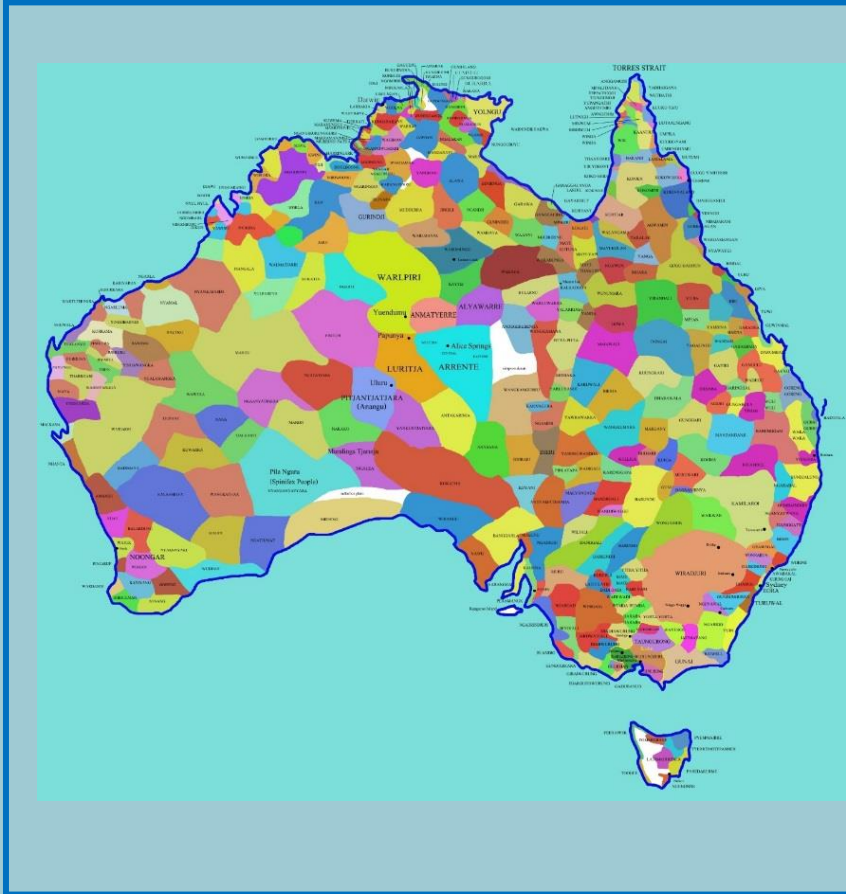
Sydney in the Regional Context

Key issue

Land Use & Transport



Indigenous & European Land Use



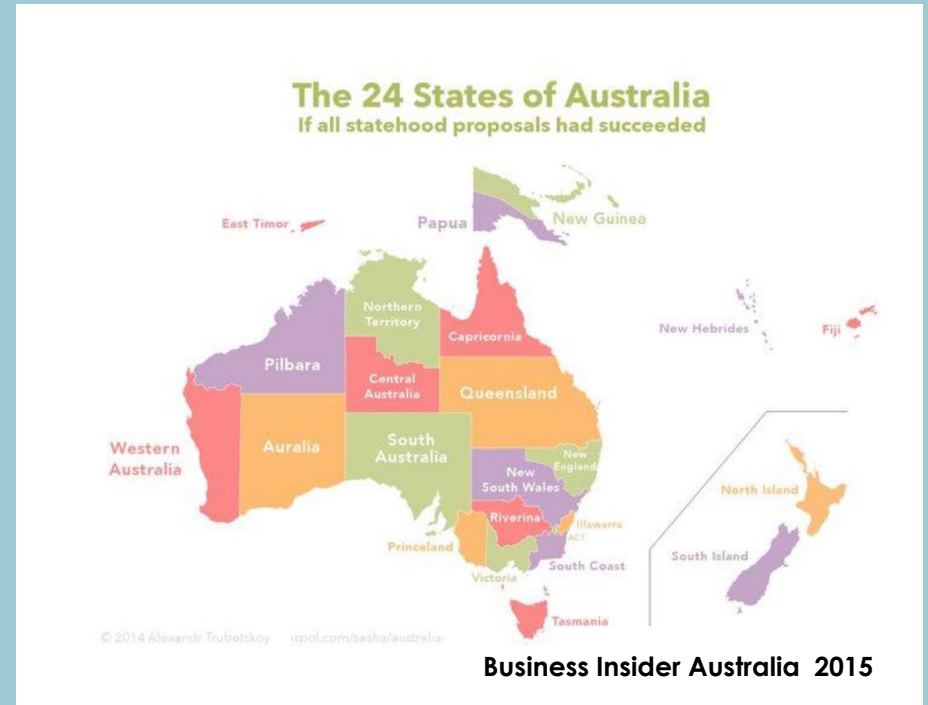
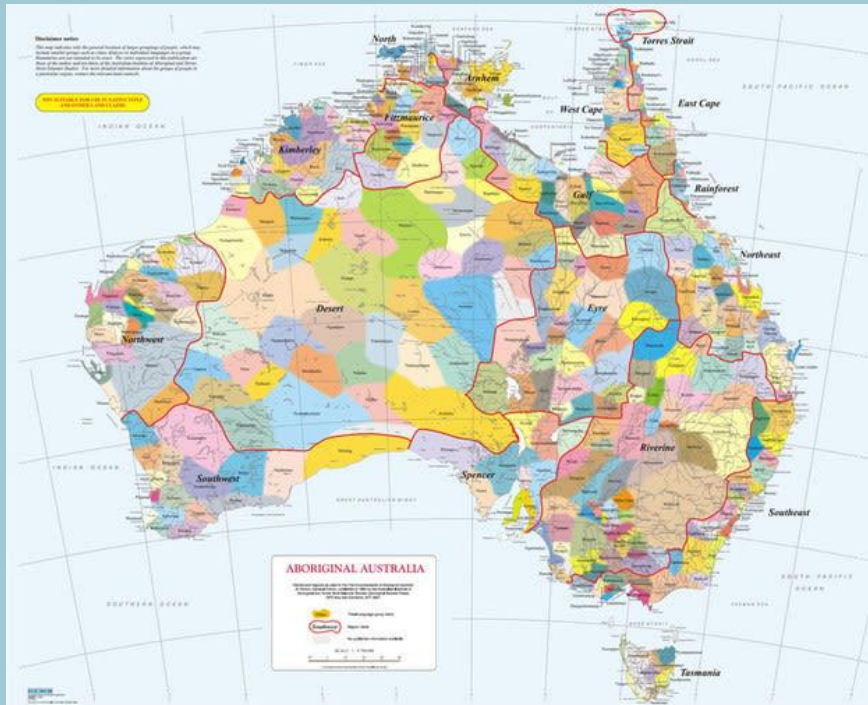
Environmental settlement pattern to straight lines

Eora Nation Darkinjung & Worimi Nation



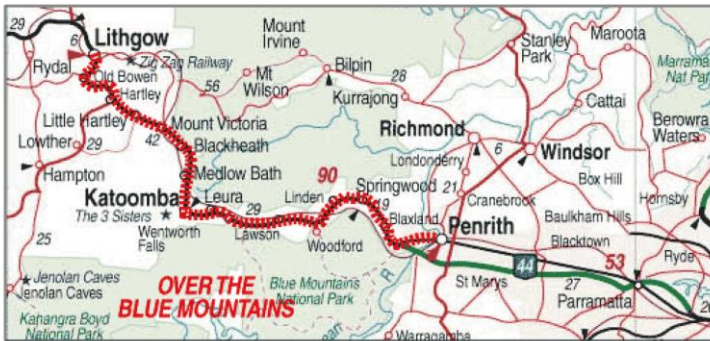
The Worimi Nation was originally bounded by four rivers – Hunter River to the south, Manning River to the north, Allyn and Patterson Rivers to the west – Barrington Tops
MCC boundaries are similar

Indigenous & European Land Use

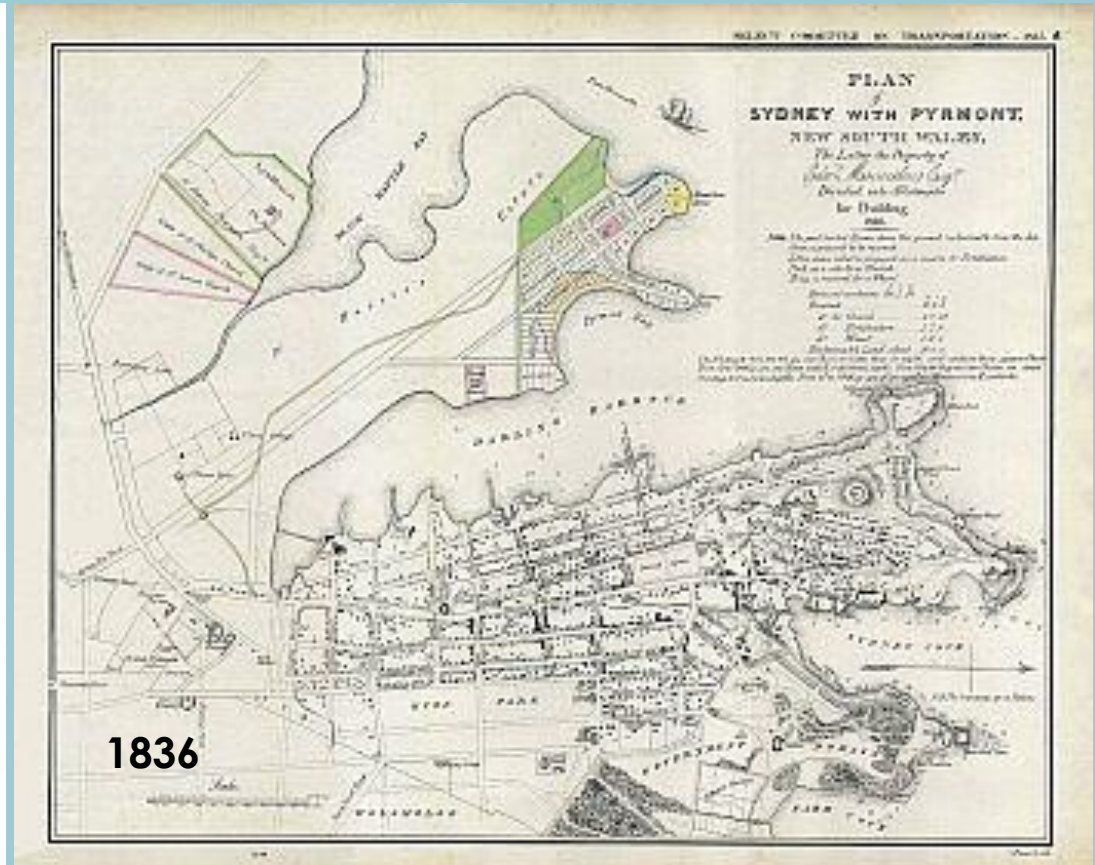


Manifest Destiny – British Empire & North America 1850s

Sydney – 19th C

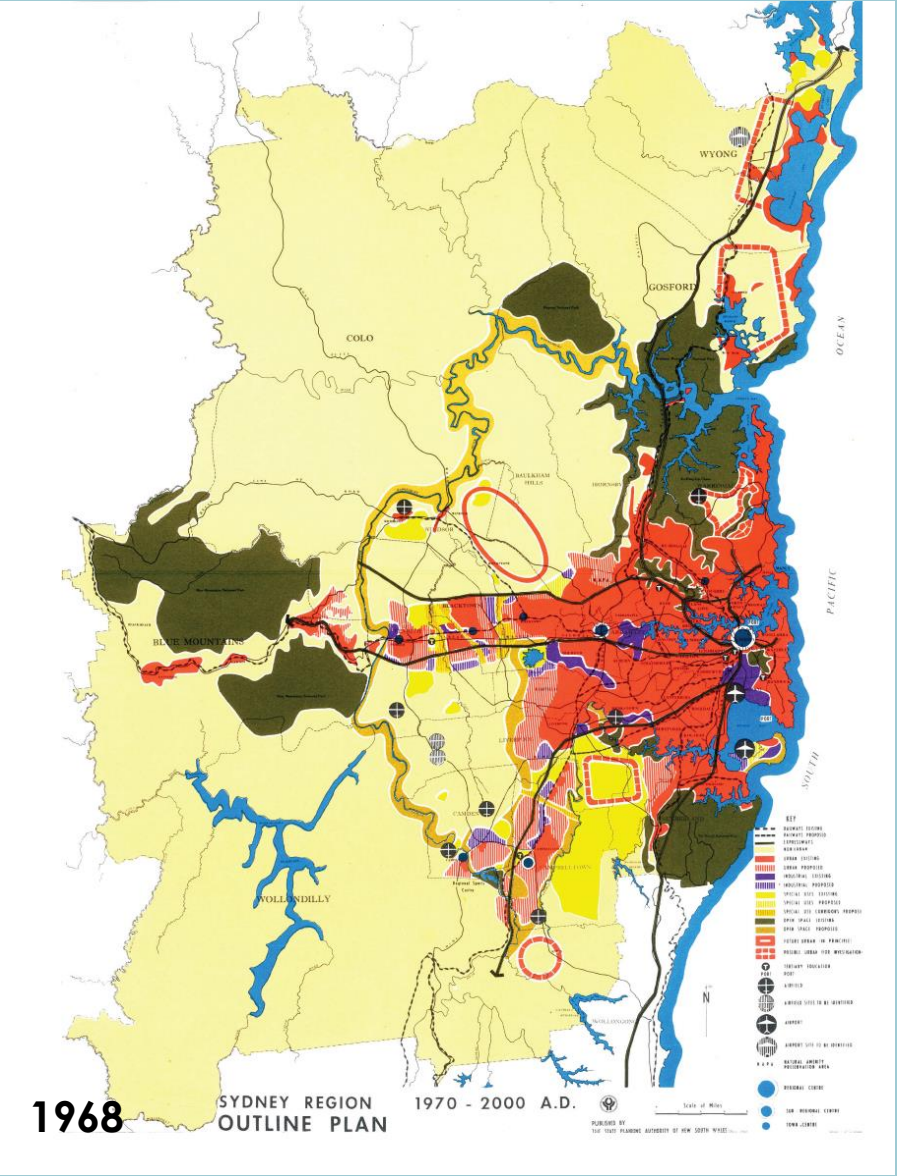
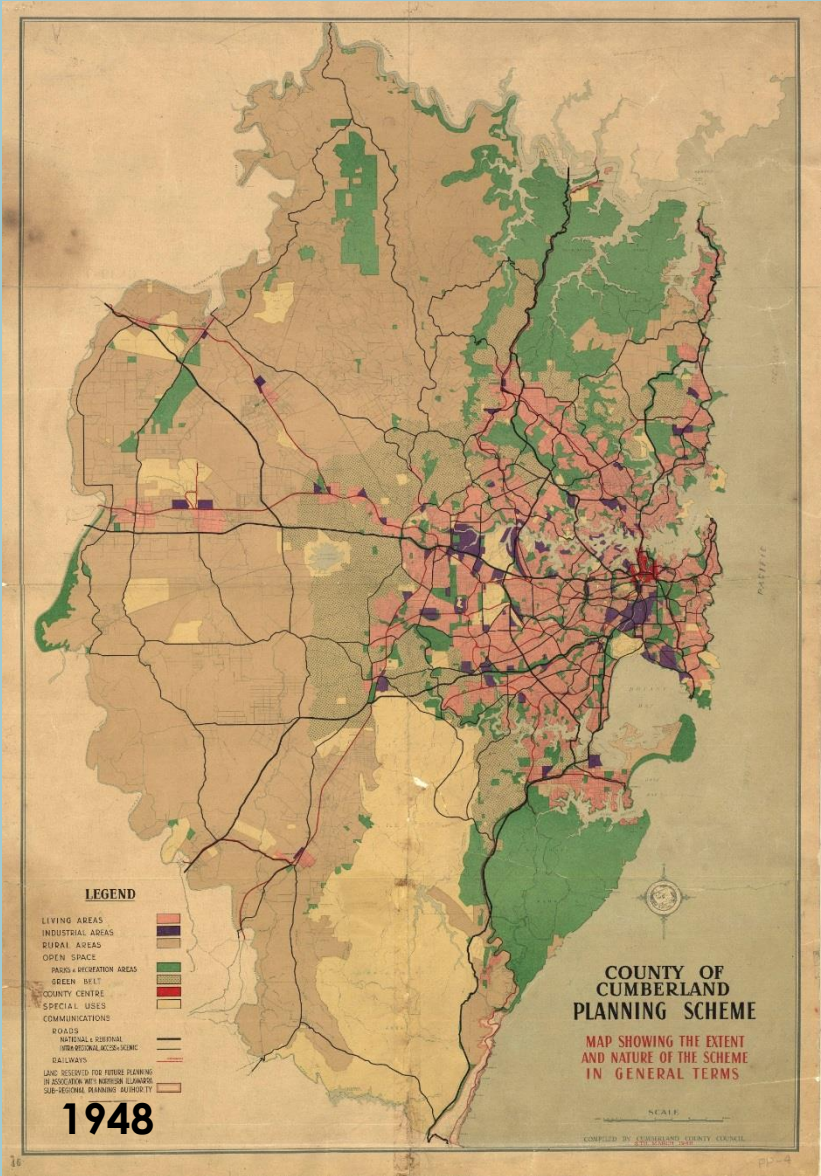


Blaxland, Lawson & Wentworth 1813

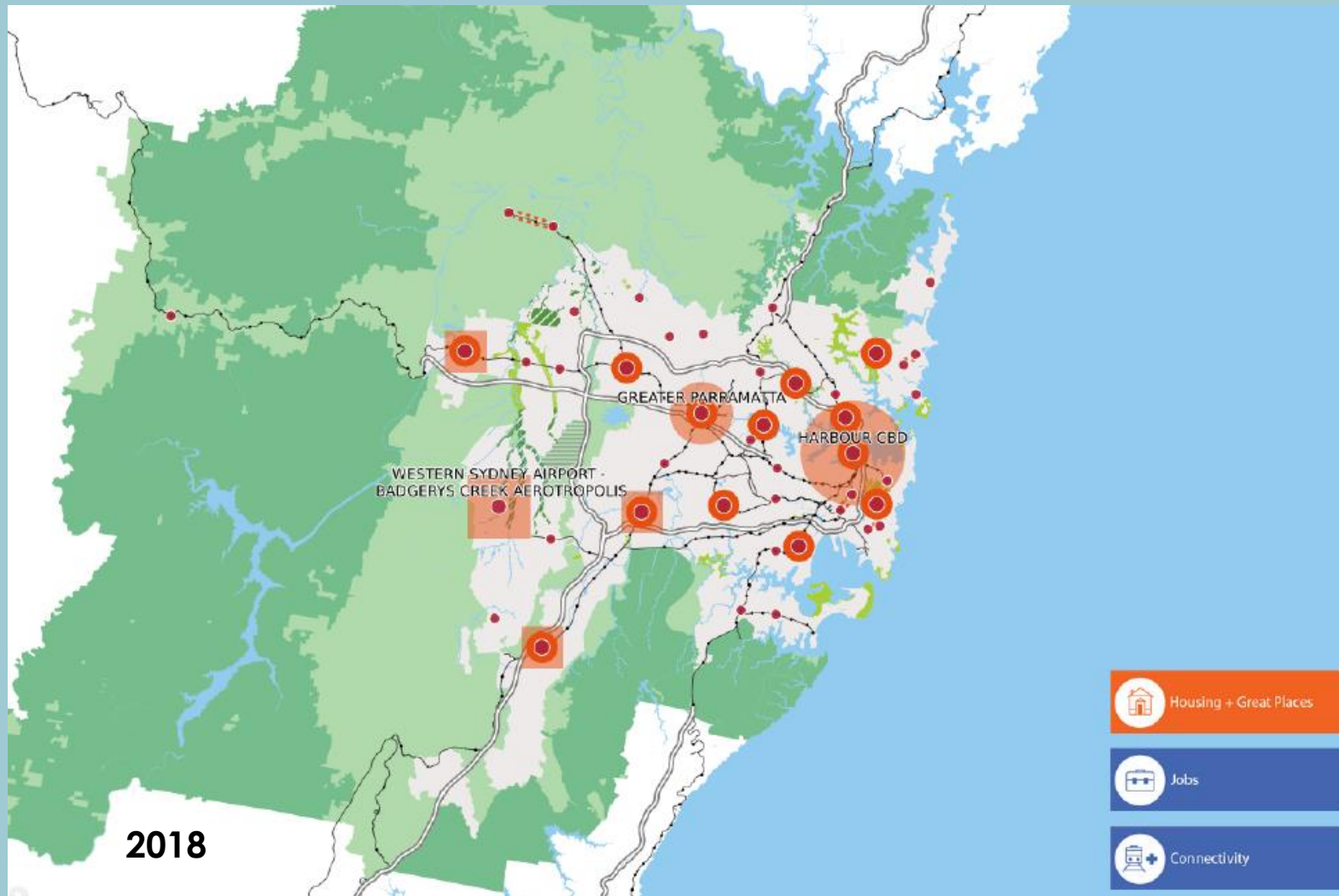


European settlement – Indigenous dispossession

Sydney – 20th C

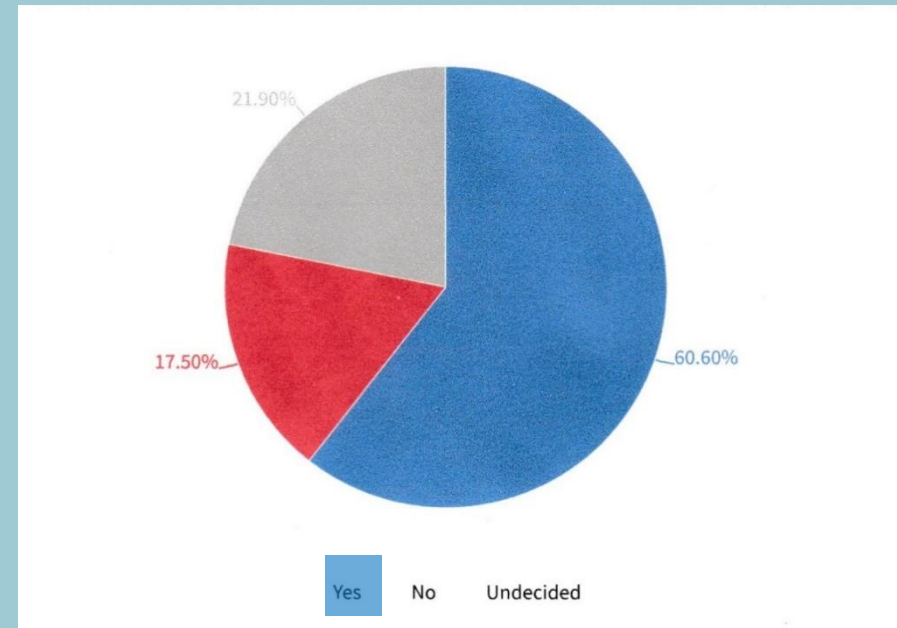


GSC – Sydney in the 21st C



Greater Sydney Commission – *scope limited by Sydney Basin*

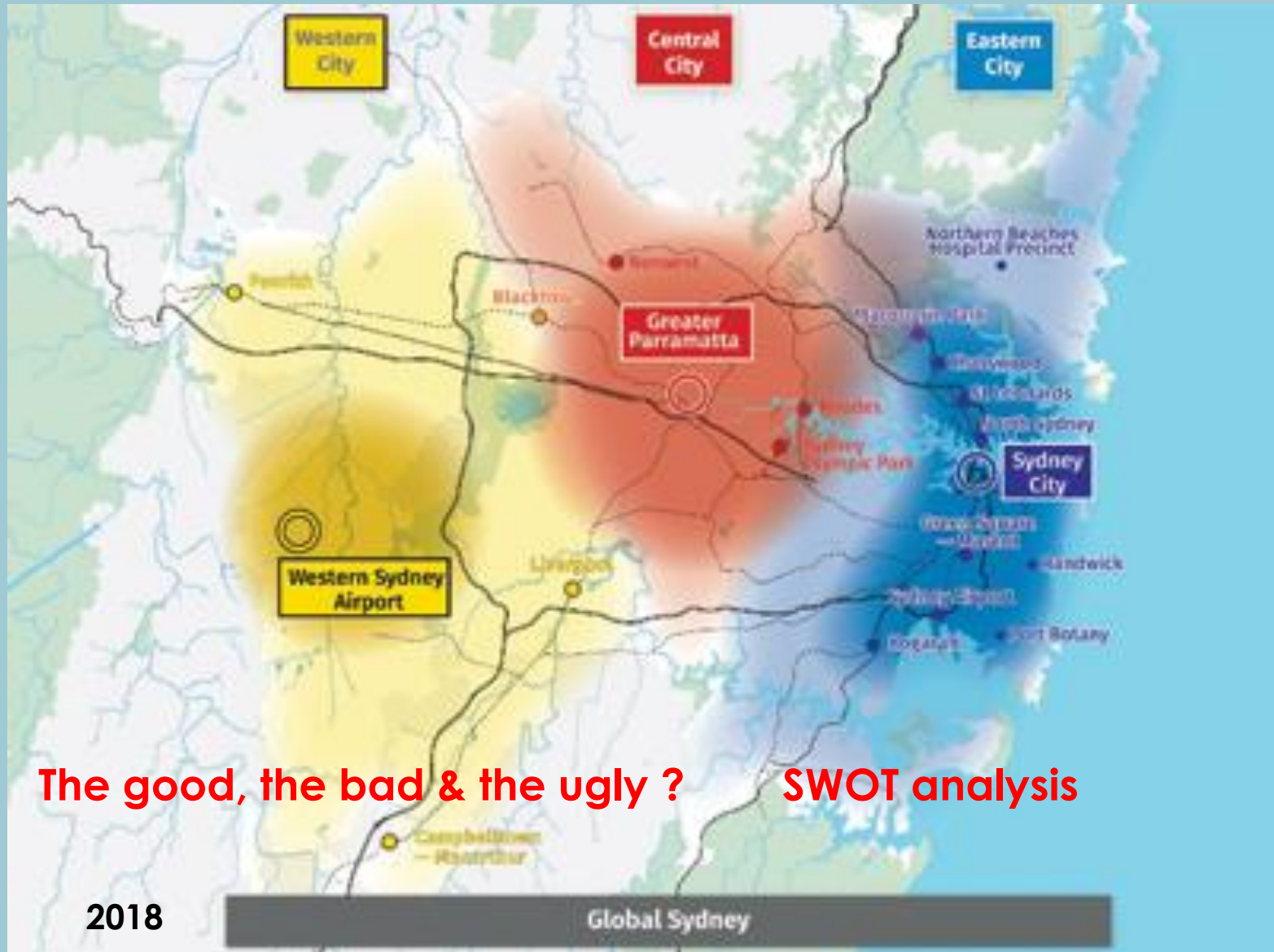
Sydney in the Regional Context



Do you think overdevelopment is harming the character of Sydney suburbs?

SMH 18 March 2018

Western Central & Eastern Cities



The good, the bad & the ugly ? SWOT analysis

2018

Global Sydney

Transport – heavy vehicles 2006

Figure 7: Heavy Commercial Vehicle Trips, Average Weekday, 2006

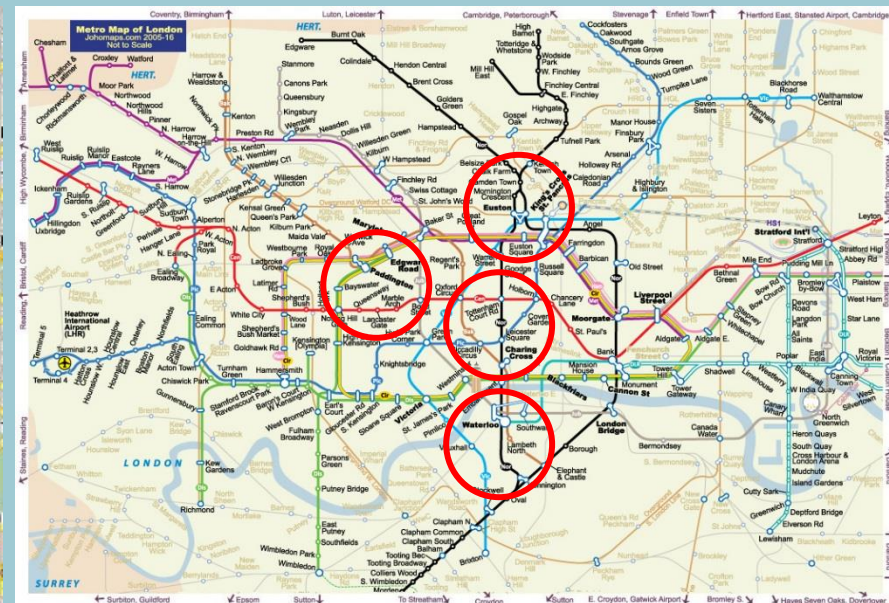
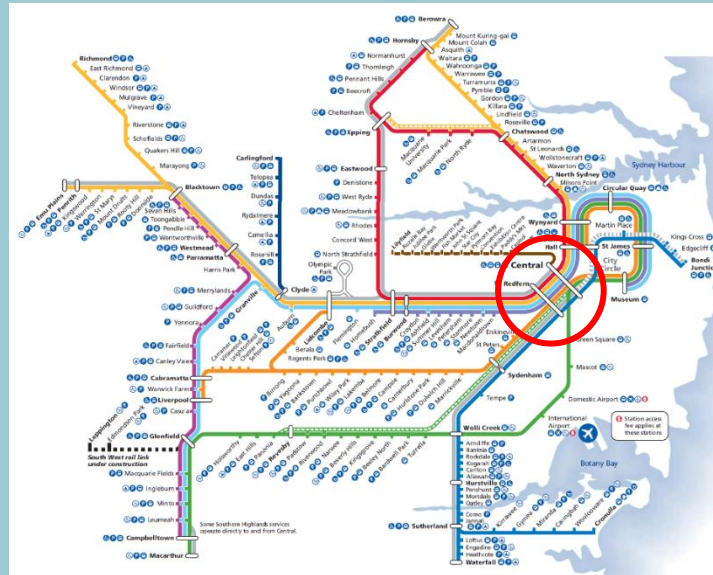


Transport – heavy vehicles 2036

Figure 8: Heavy Commercial Vehicle Trips, Average Weekday, 2036



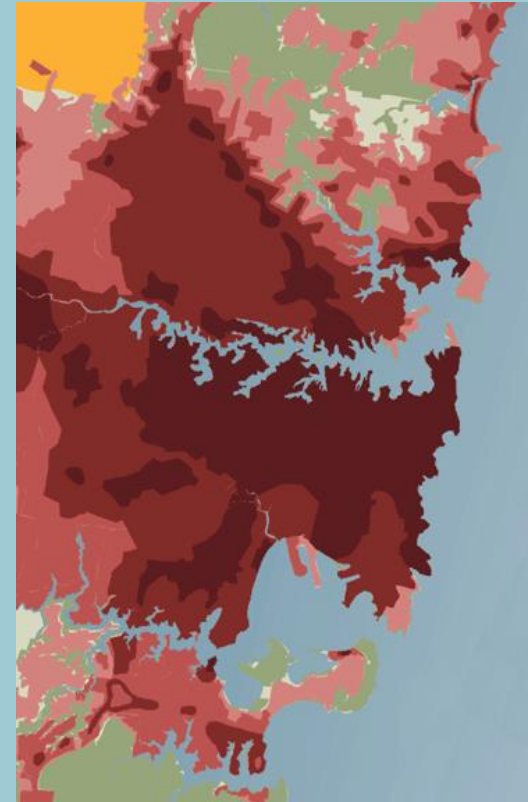
Sydney, Paris & London rail networks



Sydney in the Regional Context

Key issues

Population & Density
Water & Quality of Life



Population

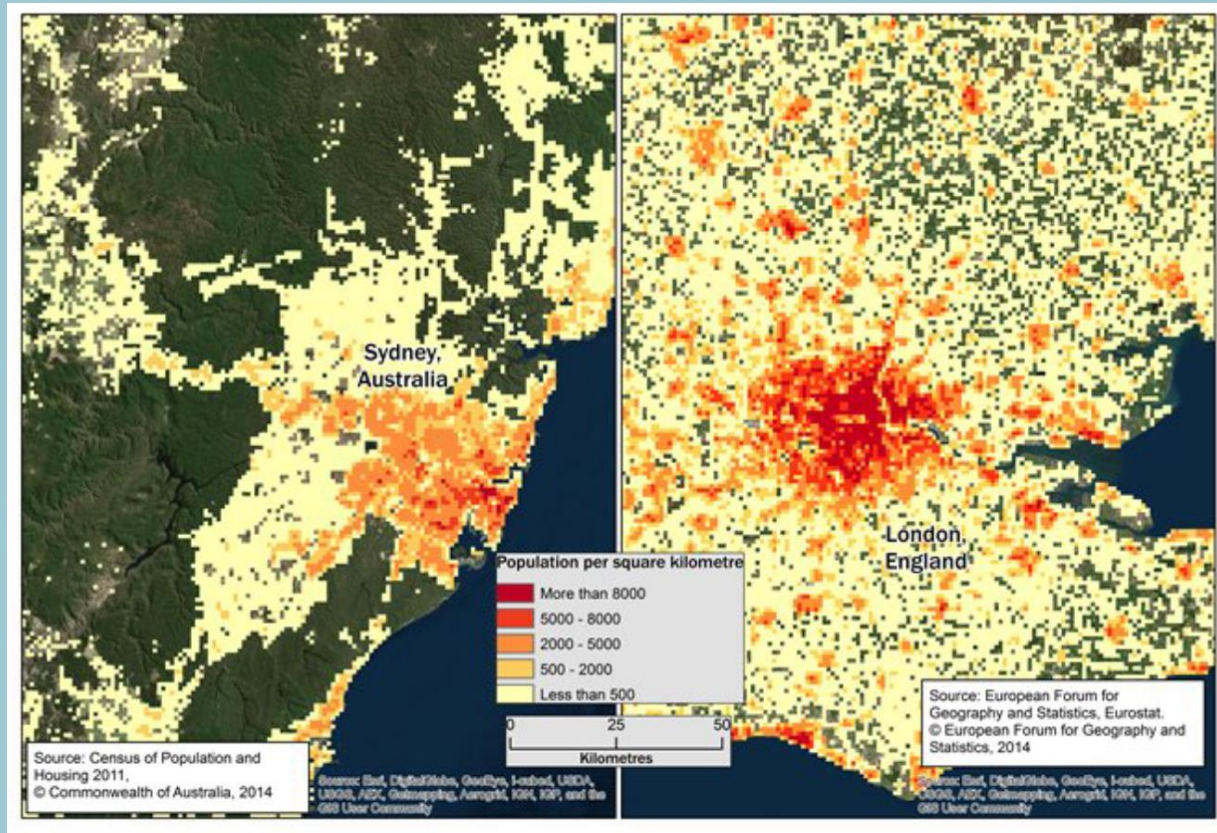
ABS Population Projections, Main Projection Series			
Assumptions	Series A	Series B	Series C
(a) From 2021(b) From 2010-11 in A and C. From 2007-08 in B.(c) From 2056.Source: ABS Population Projections, Australia, 2006 to 2101			
Total fertility rate (a)	2.0	1.8	1.6
Net overseas migration	220 000	180 000	140 000
Life expectancy at birth—male (c)	93.9	85.0	85.0
Life expectancy at birth—female (c)	96.1	88.0	88.0
Projected population at June 30 2056	42.0	35.5	30.9

Population & Density

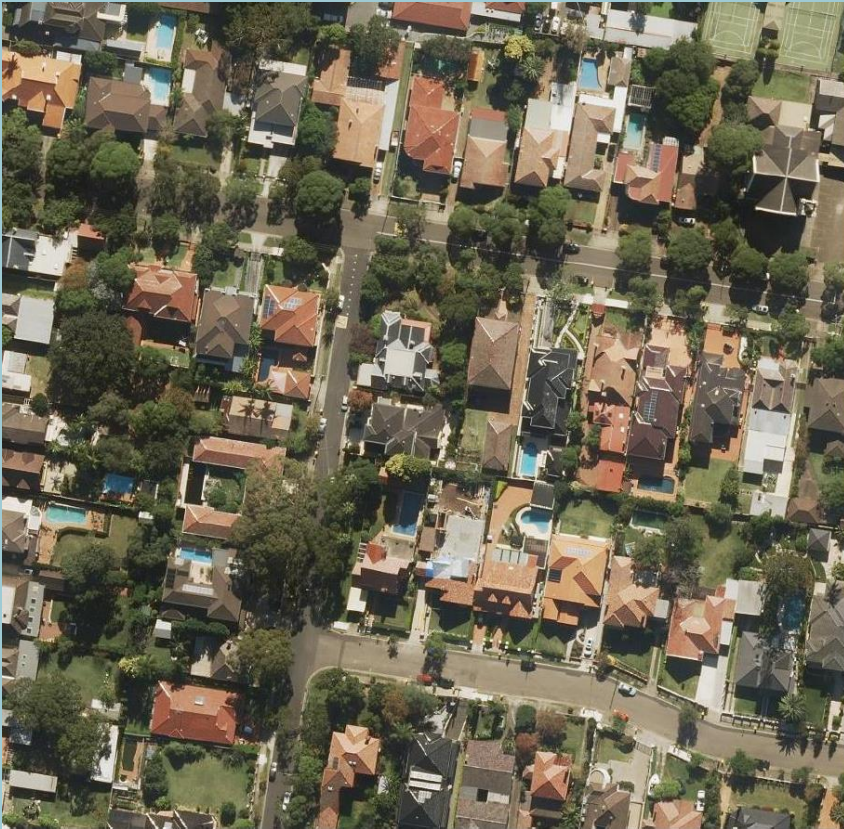
Current projections Australia 30m to 42m by 2056

Current projections NSW 7m to 10m by 2036

Current projections Sydney 5m to 8.5m by 2061



Population & Density

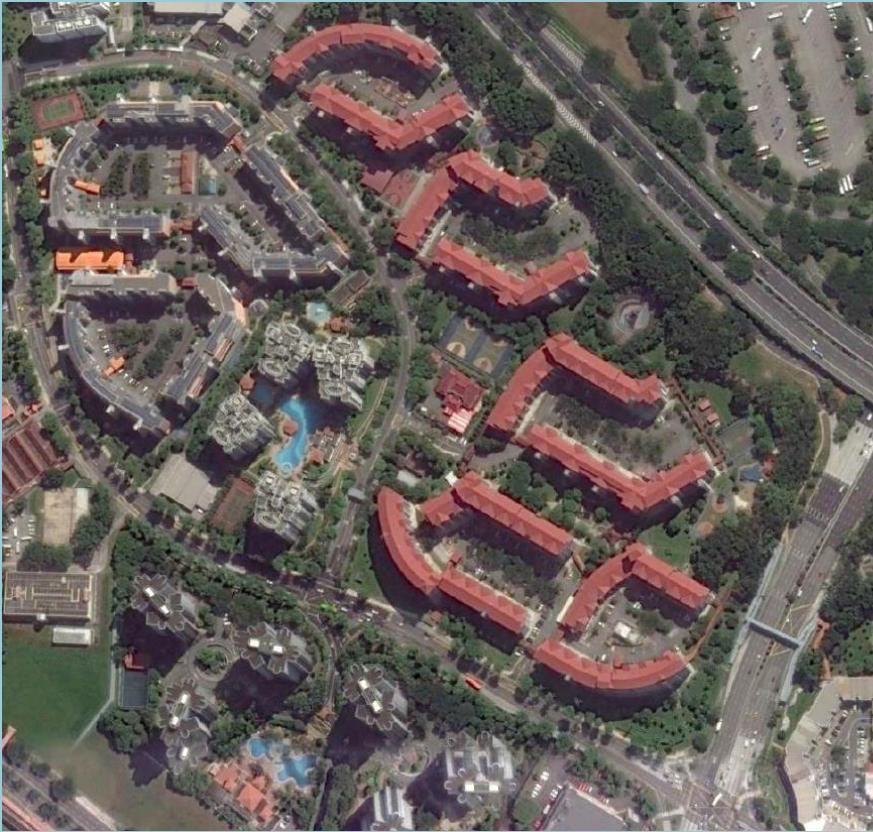


Strathfield



South Camden

Population & Density



Singapore 5.7m



Paris 10m

Quality of Life

Current projections Sydney 5m to 8.5m by 2061

Key issues include density, congestion and quality of life

Ageing demographic – ‘accessible and green’

Artificial intelligence / robots / autonomous vehicles – changing society

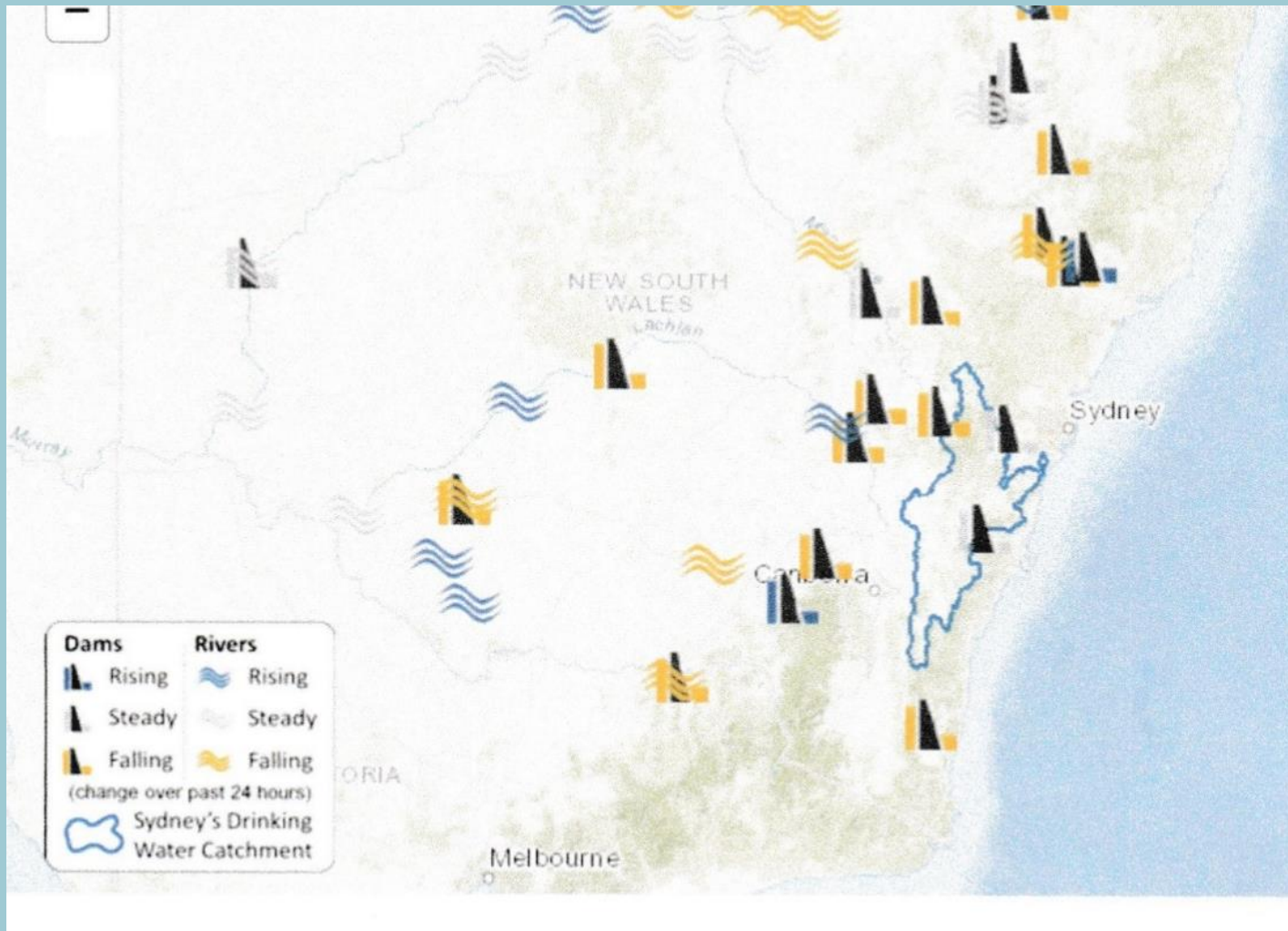
In 1930 John Maynard Keynes predicted that by 2030 we will only need to work 15 hours a week – *The difficulty lies not so much in developing new ideas as in escaping from old ones.*

To be able to fill leisure intelligently is the last product of civilisation.

Bertrand Russell 1872 to 1970

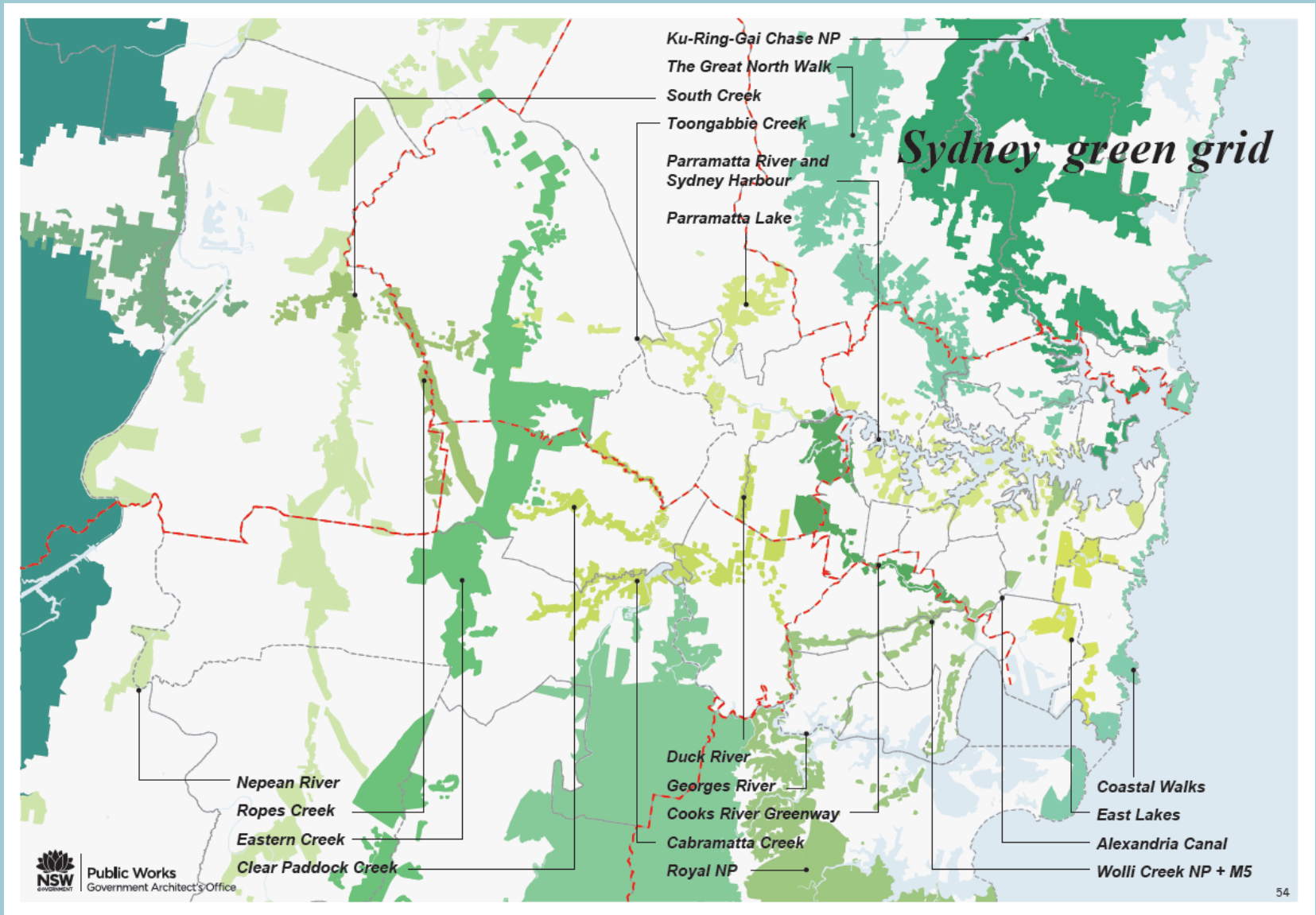


Water & Quality of Life



NSW dam & river levels Water NSW

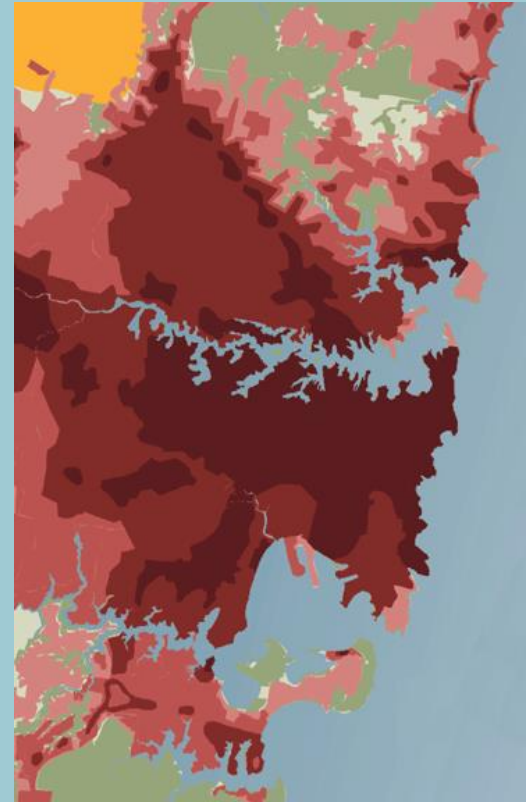
Quality of Life – Green Grid NSW PWD GA 2013



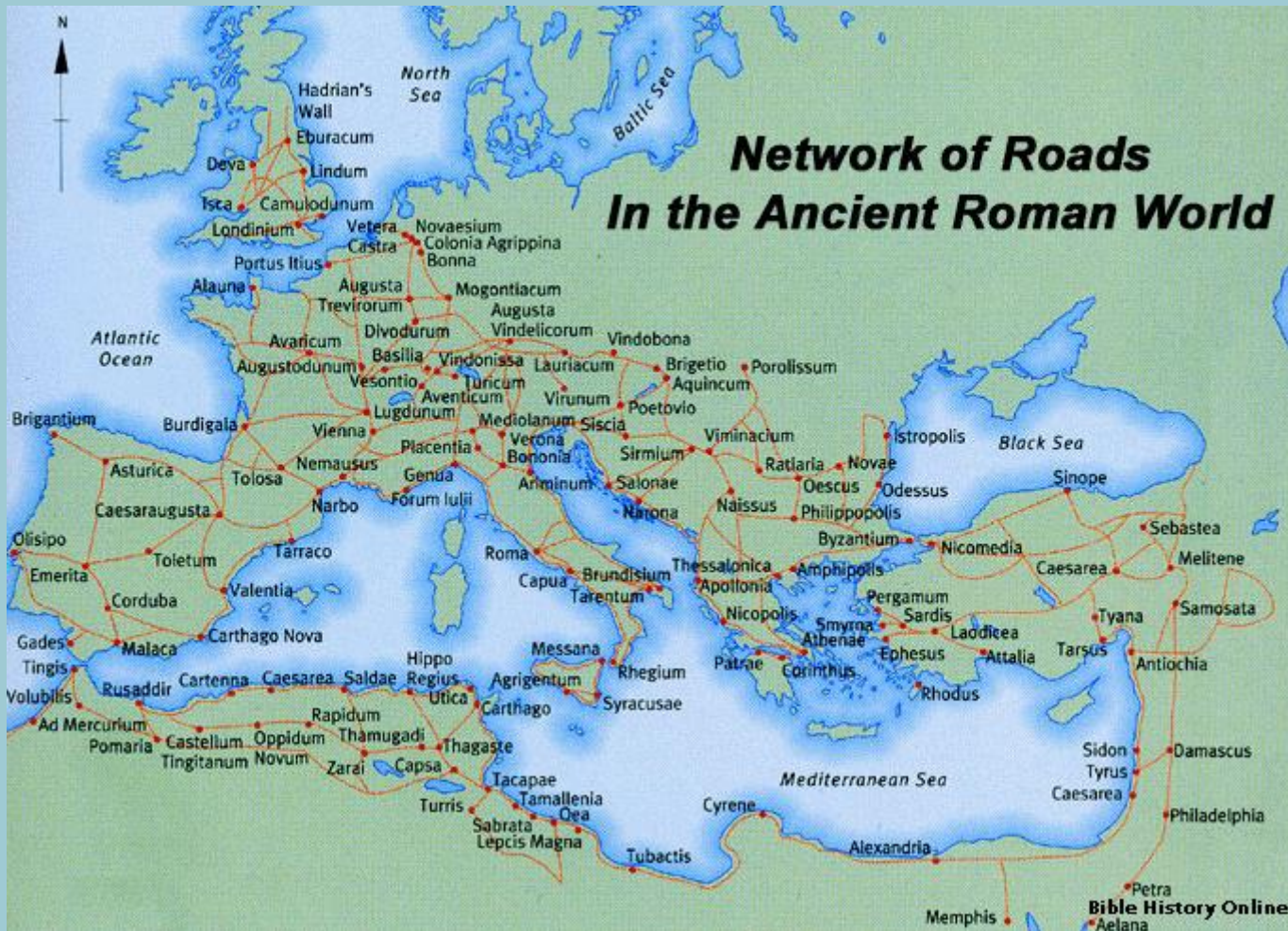
Sydney in the Regional Context

Key issue

Regional strategy

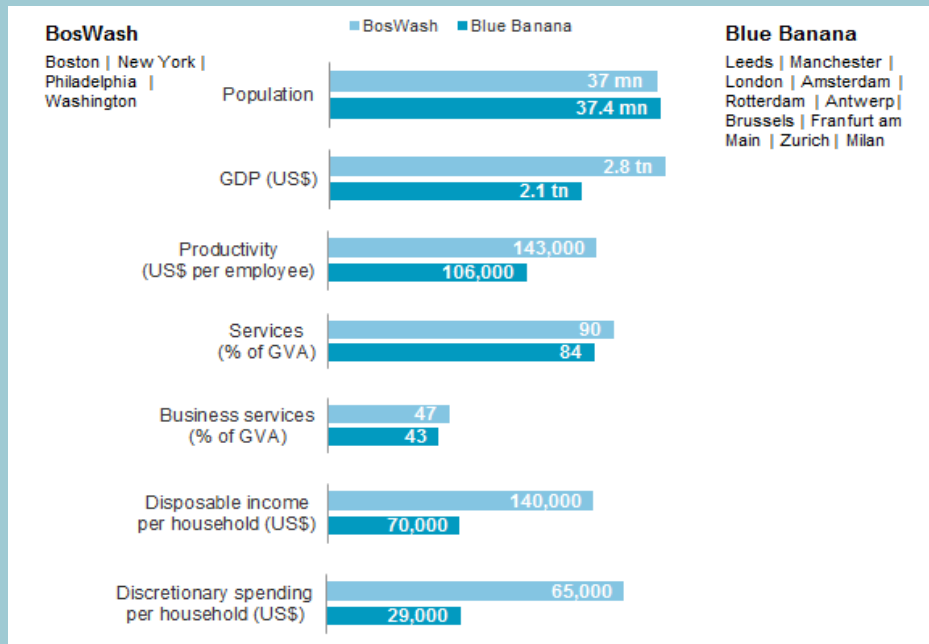
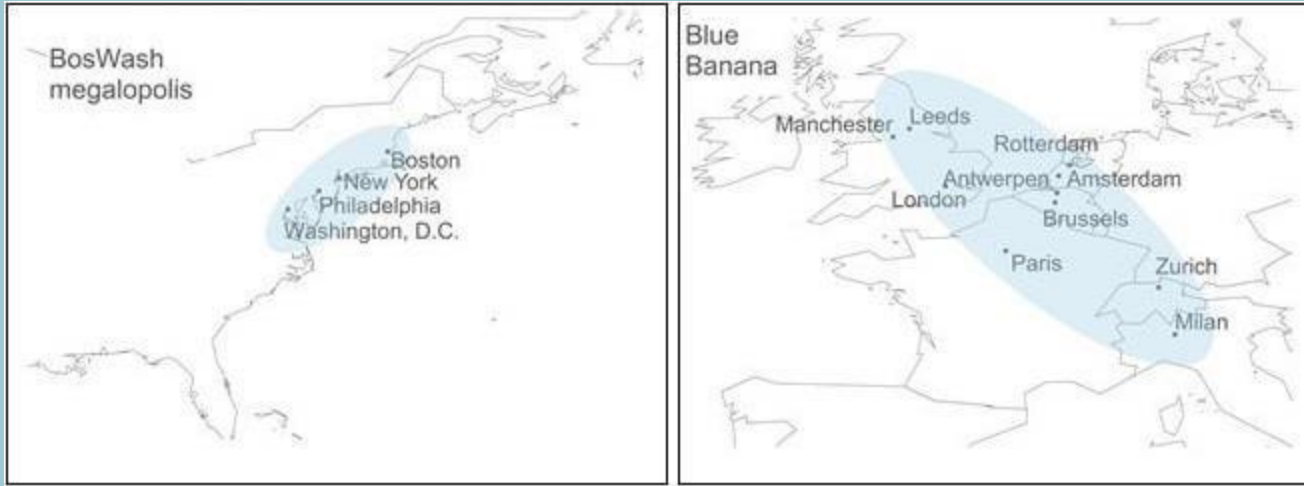


Regional reference



Considered approach to transport planning and city design

BosWash & Blue Banana



Netherlands

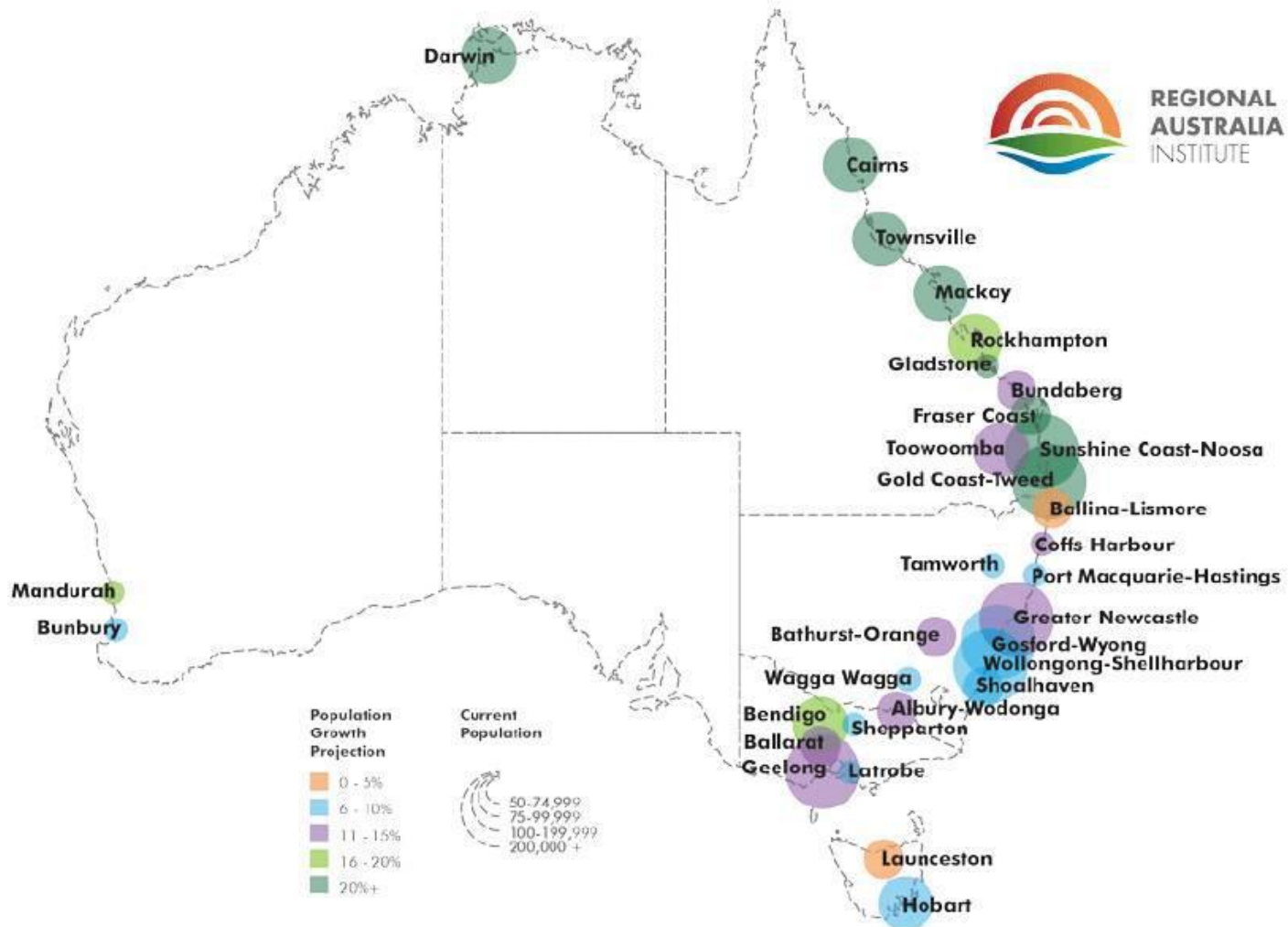
CASE STUDY – THE RANDSTAD

Rail Travel Times the Randstad



Polycentric character population 75m
Rotterdam largest port in Europe + Schiphol Airport

Regional Potential

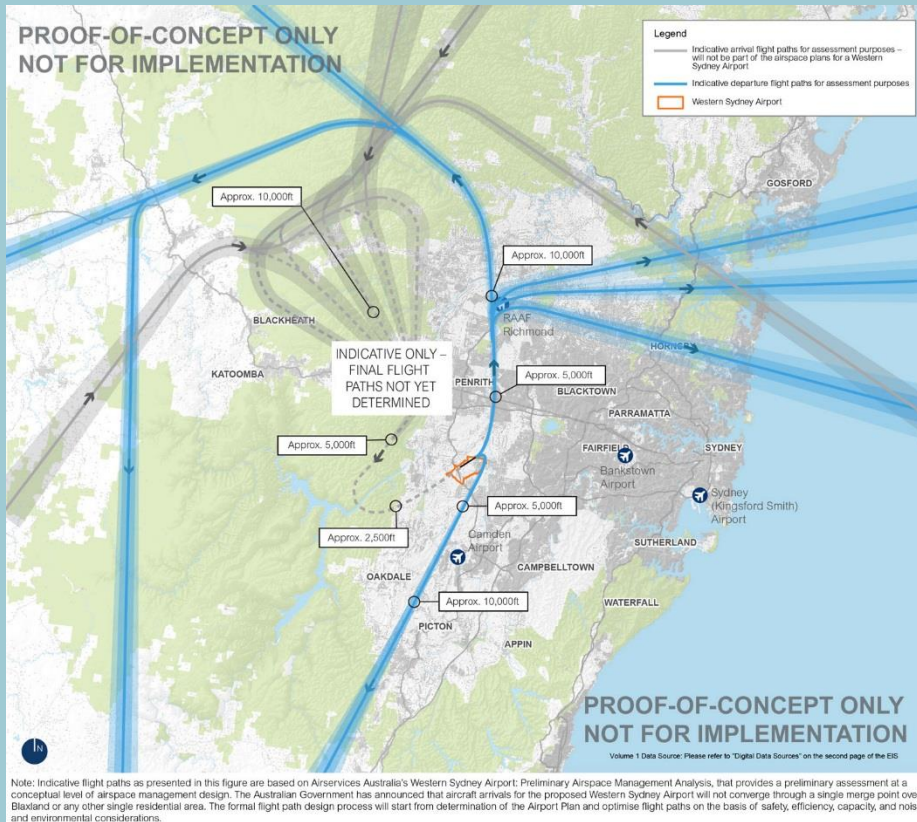


RAI recommends better migration, planning and infrastructure policies

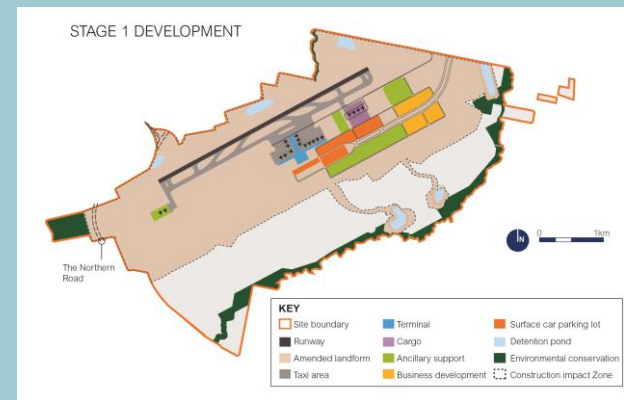
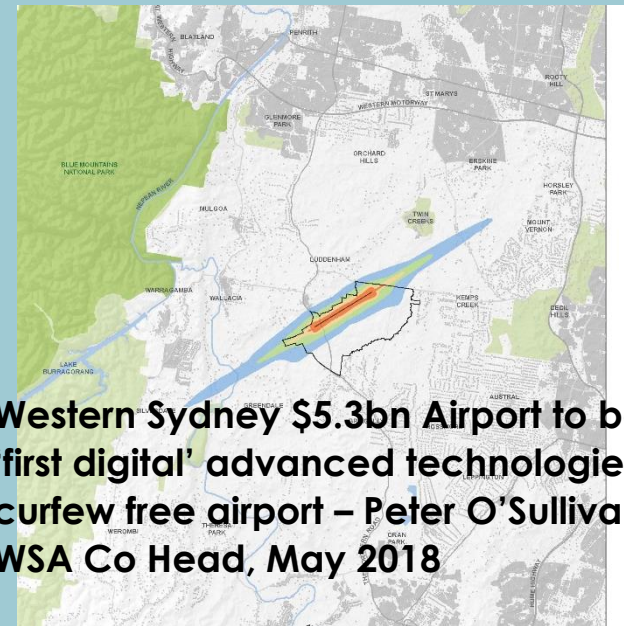
Regional Potential



Air Transport strategy

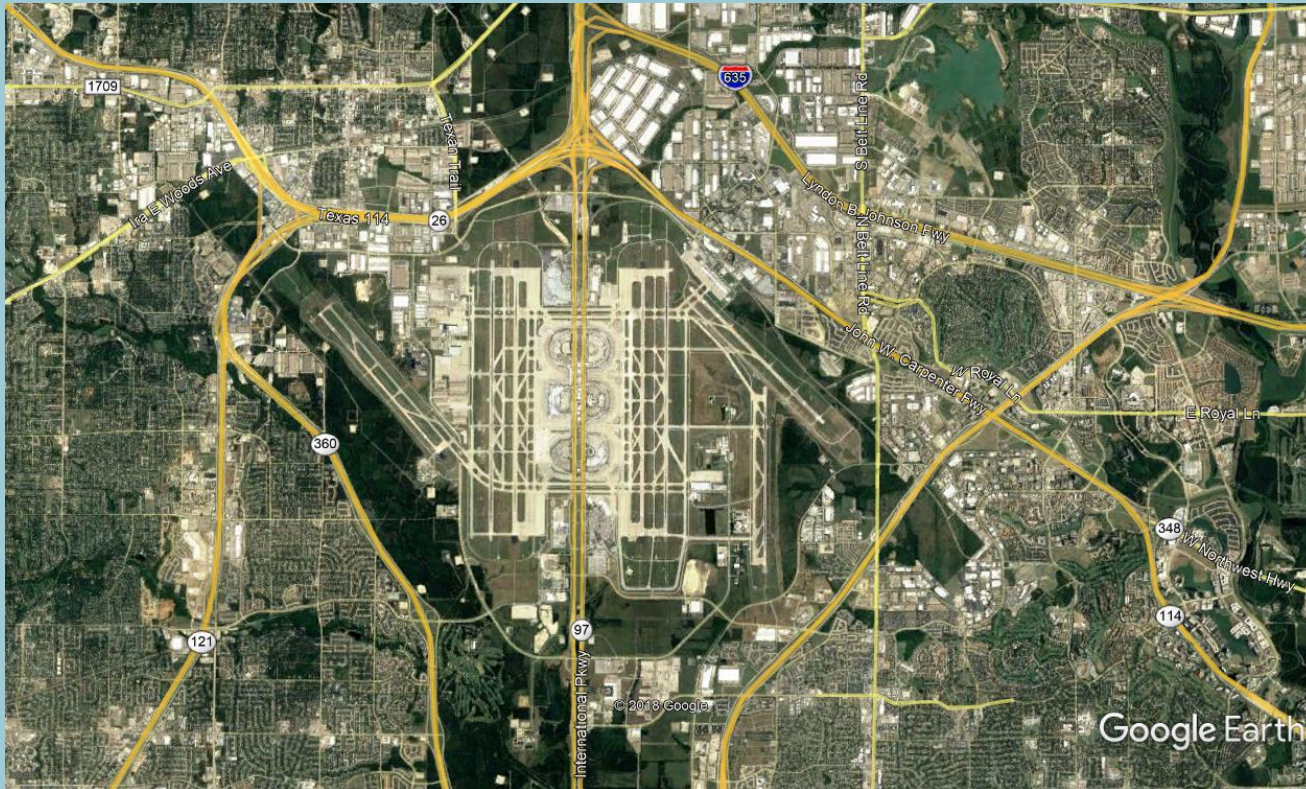


Sydney Airport



Badgerys Creek

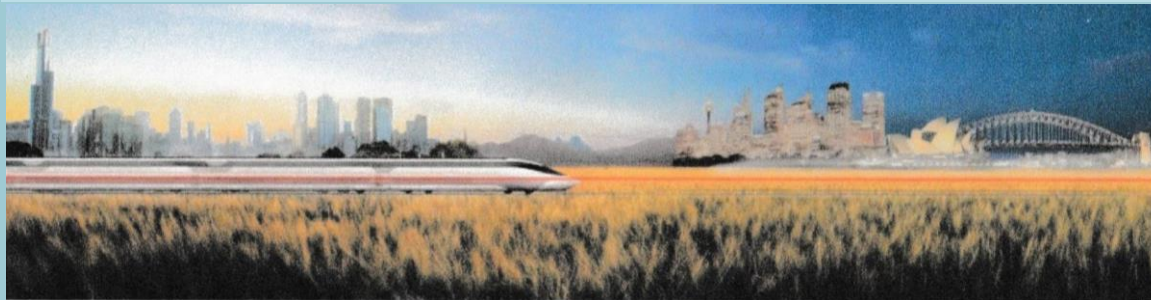
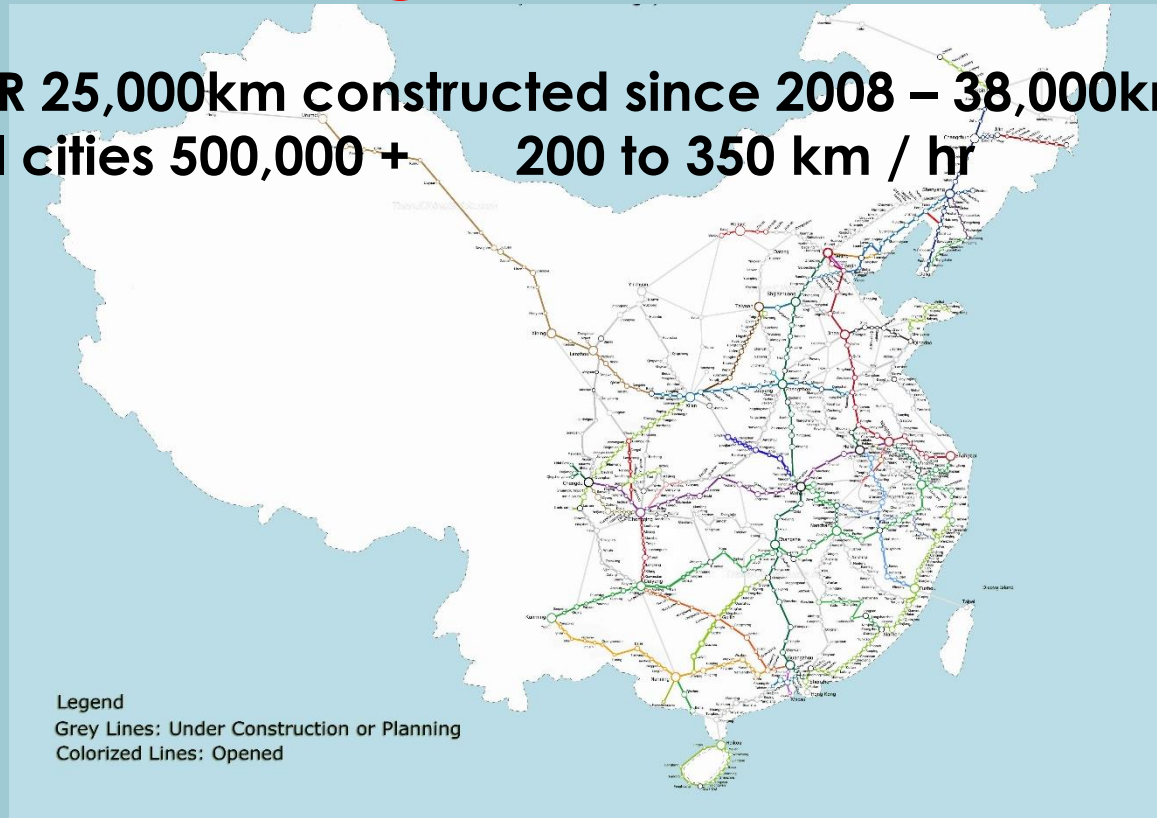
Air Transport strategy



Sydney Airport 800ha ± Badgerys Creek 1700ha ±
Dallas Fort Worth 7,000ha ±

High Speed Rail

China HSR 25,000km constructed since 2008 – 38,000km by 2025
linking all cities 500,000 + 200 to 350 km / hr



CLARA Consolidated Land & Rail Australia – Melbourne Sydney HSR

Autonomous vehicles Driverless Future

Public v shared vehicle ownership ?

Safety ?

Less road space – reallocating road and carpark areas ?

Cars currently used approx 5% of the time



Sydney: Transurban six month trial of how semi-autonomous vehicles from seven manufacturers adapt to urban road conditions – April 2018

Singapore: Planned pilot city with driverless electric cars, trucks and buses – May 2018

Sydney in the Regional Context

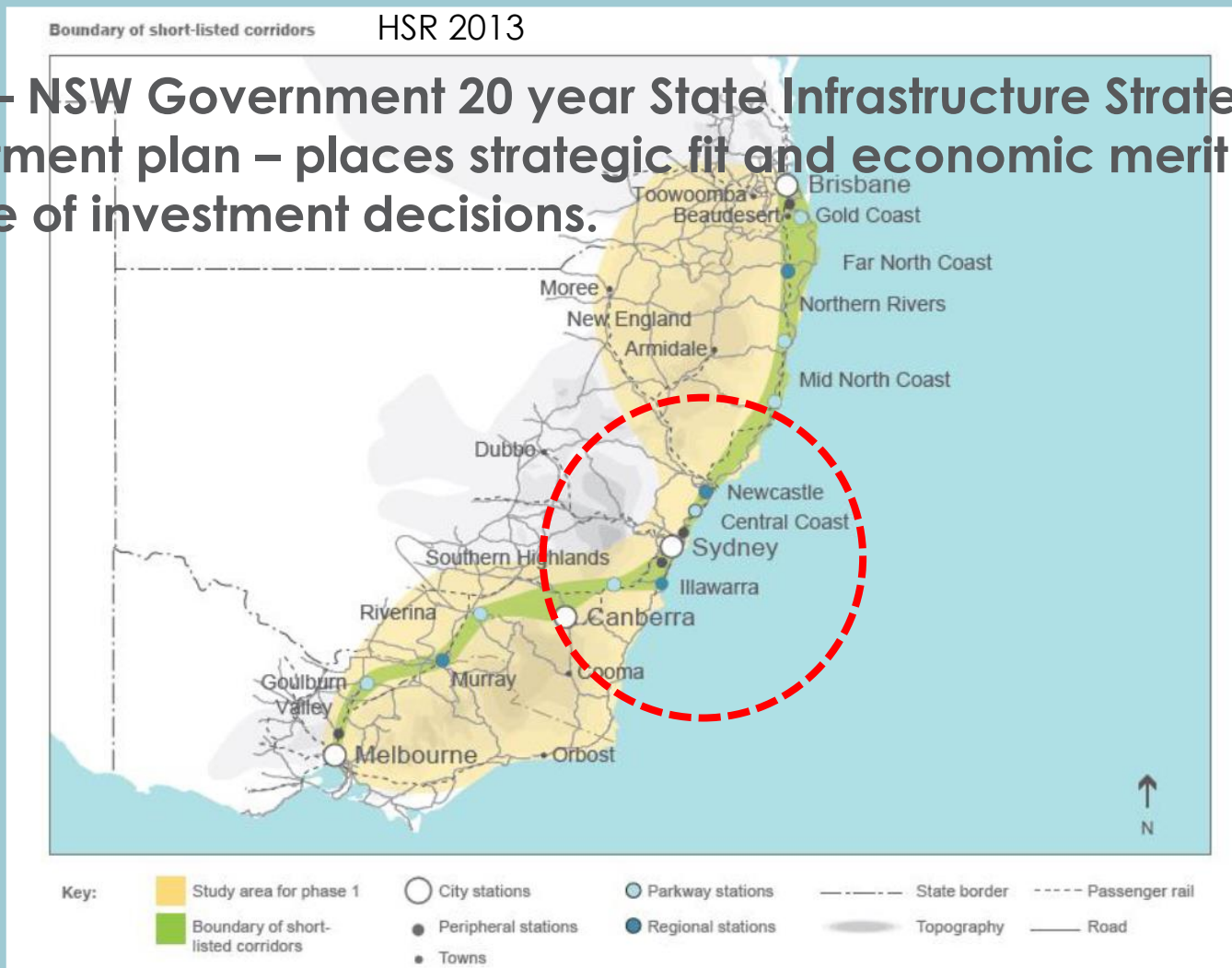
Issues, questions, discussion

- **Sydney Metropolitan Authority – rationalise regional and local roles**
- **Sydney region limits of growth – within and beyond Cumberland plain**
- **NSW regional strategy for next 50 to 100 years**
- **NSW transport strategy – rail, air, road, sea, bikes, pedestrian +**
- **Quality of life, work leisure relationship**
- **PIA role, strategies and legacy**



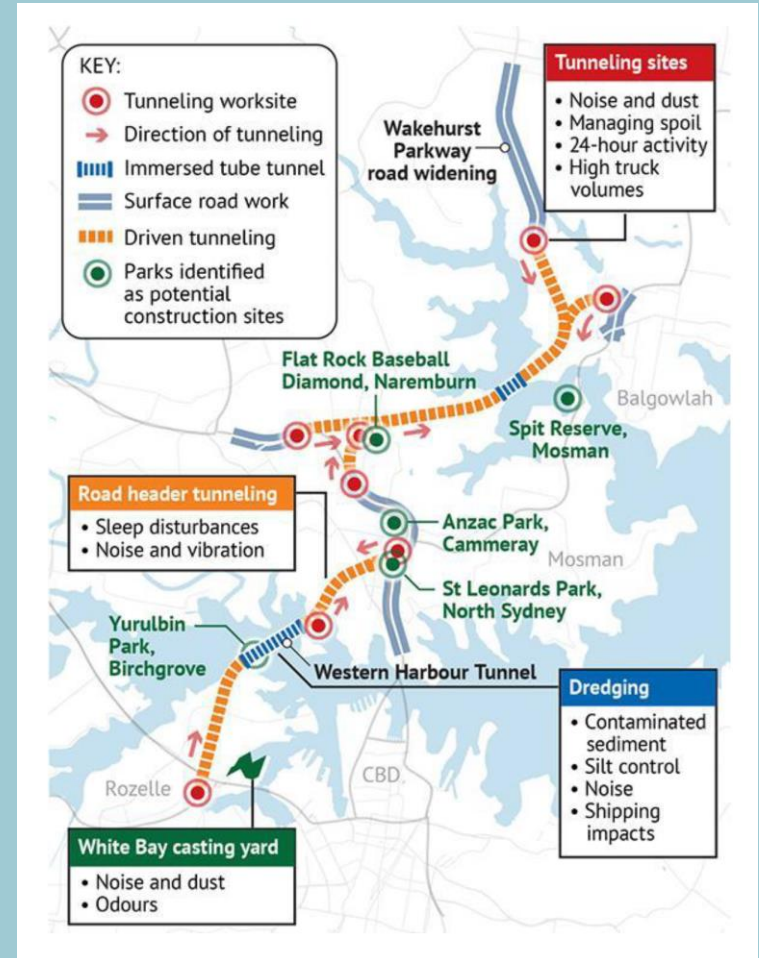
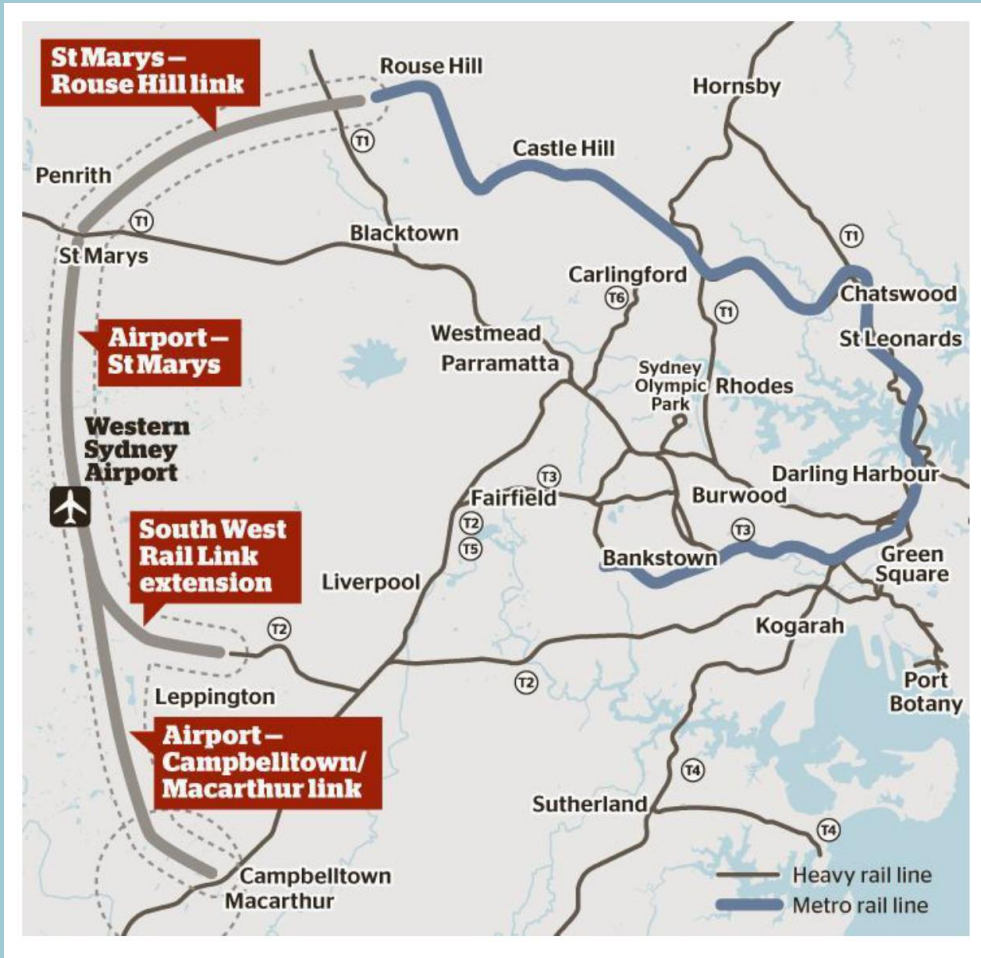
Regional Strategy

2018 – NSW Government 20 year State Infrastructure Strategy (SIS) investment plan – places strategic fit and economic merit at the centre of investment decisions.



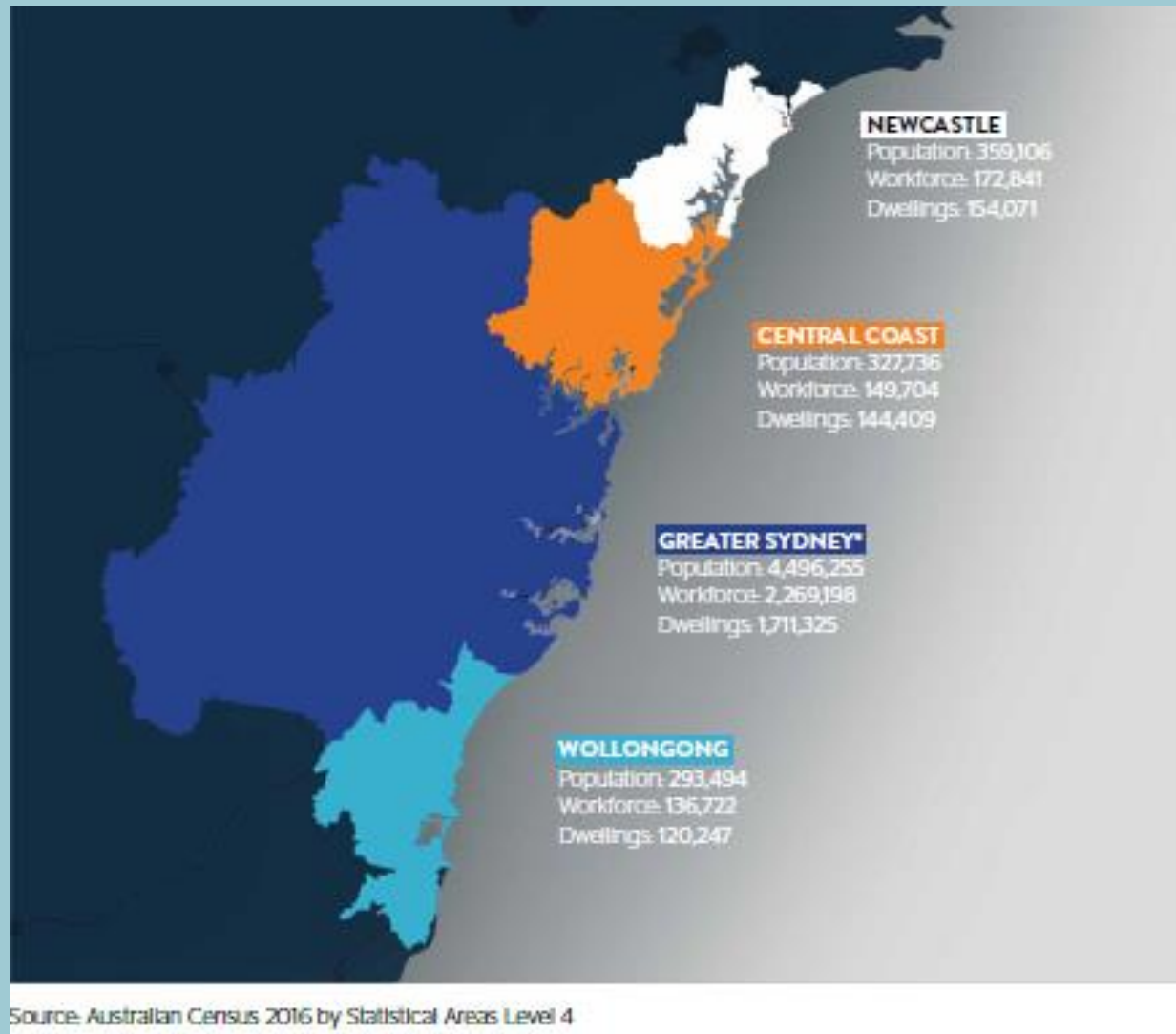
Cancastle or Newberra or ?

Land Use & Transport



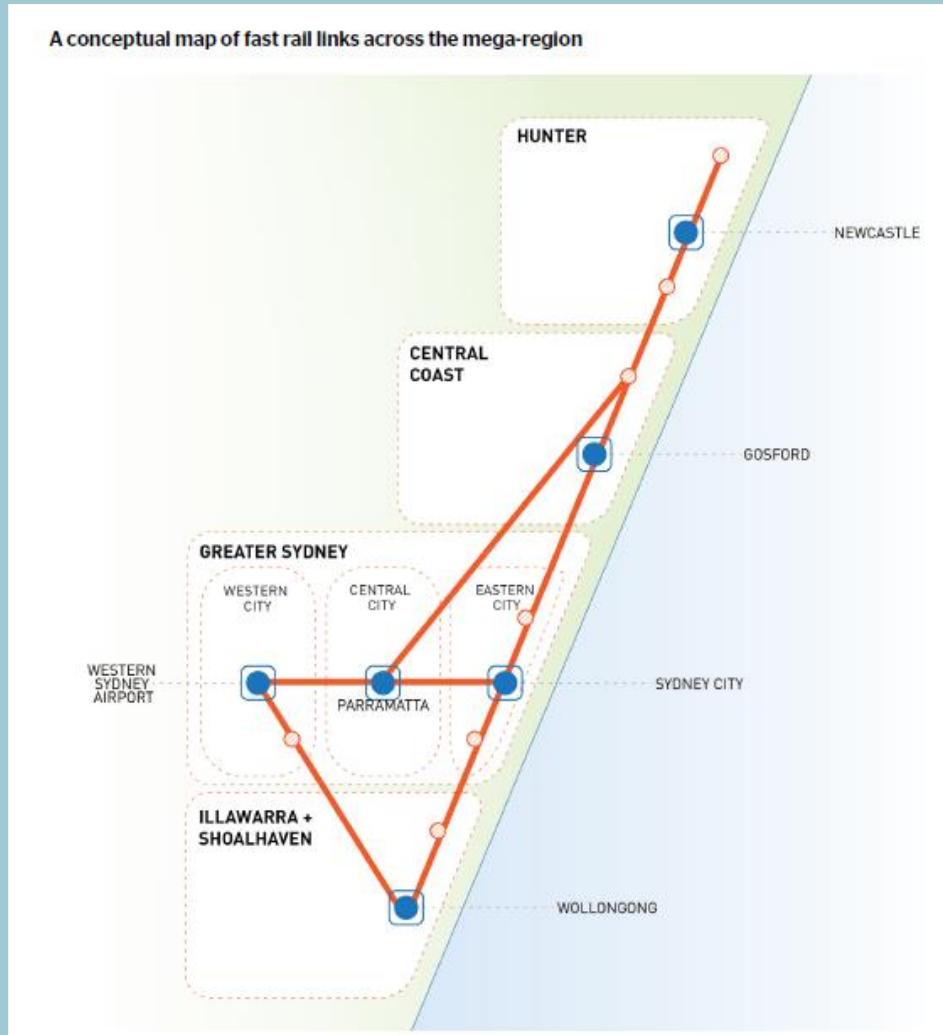
Opportunities – Metro systems, road pricing, blue & green networks

Regional Strategy



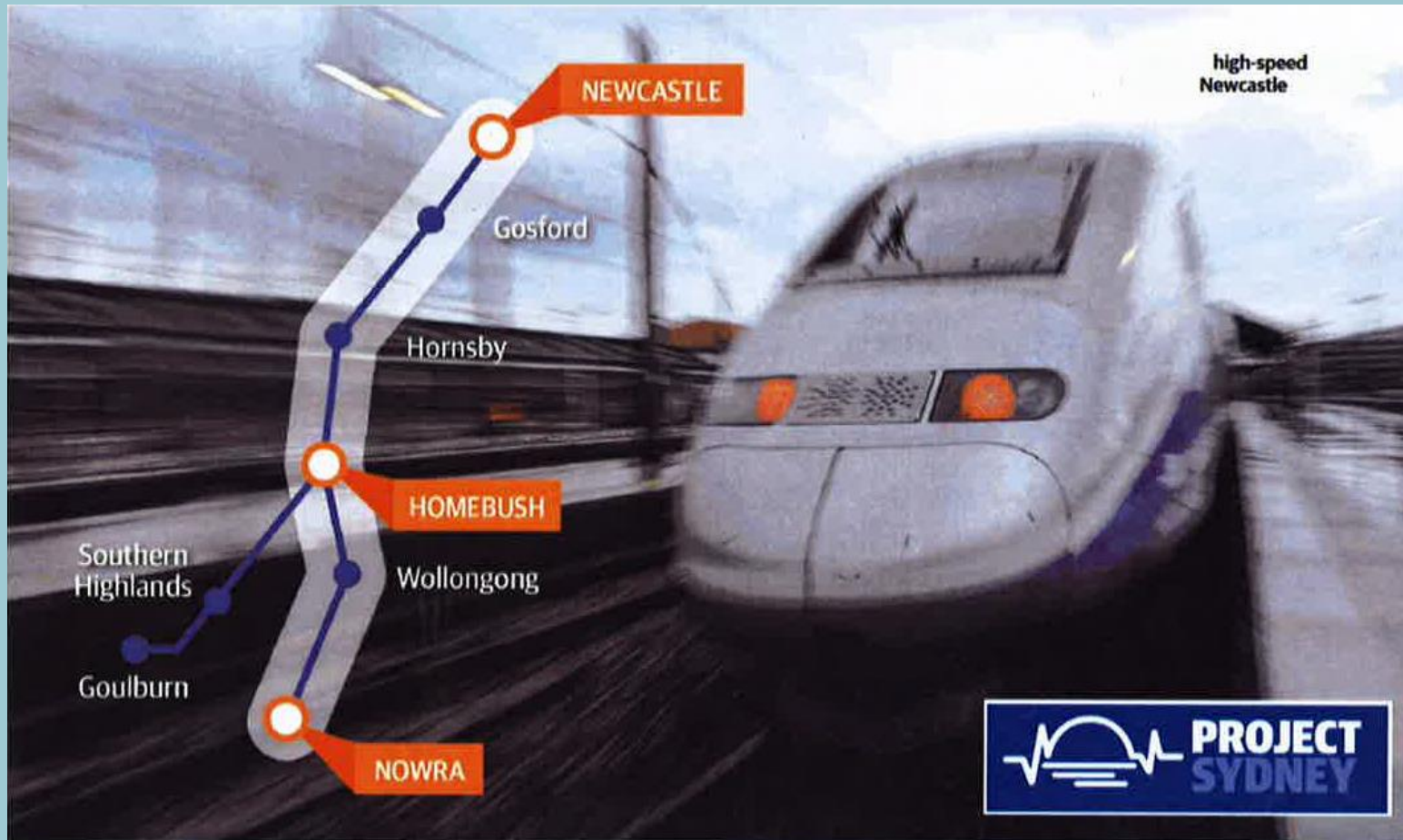
Greater Sydney Region

Regional Strategy



Sydney Mega Region – HSR links – The Committee for Sydney 2018

Regional Strategy



**John Alexander MP Better Cities Inquiry 2016 to date
Evidence from Korean Chinese Japanese operators
Newcastle to Homebush 30 minutes – June 2018**

Sydney Metro

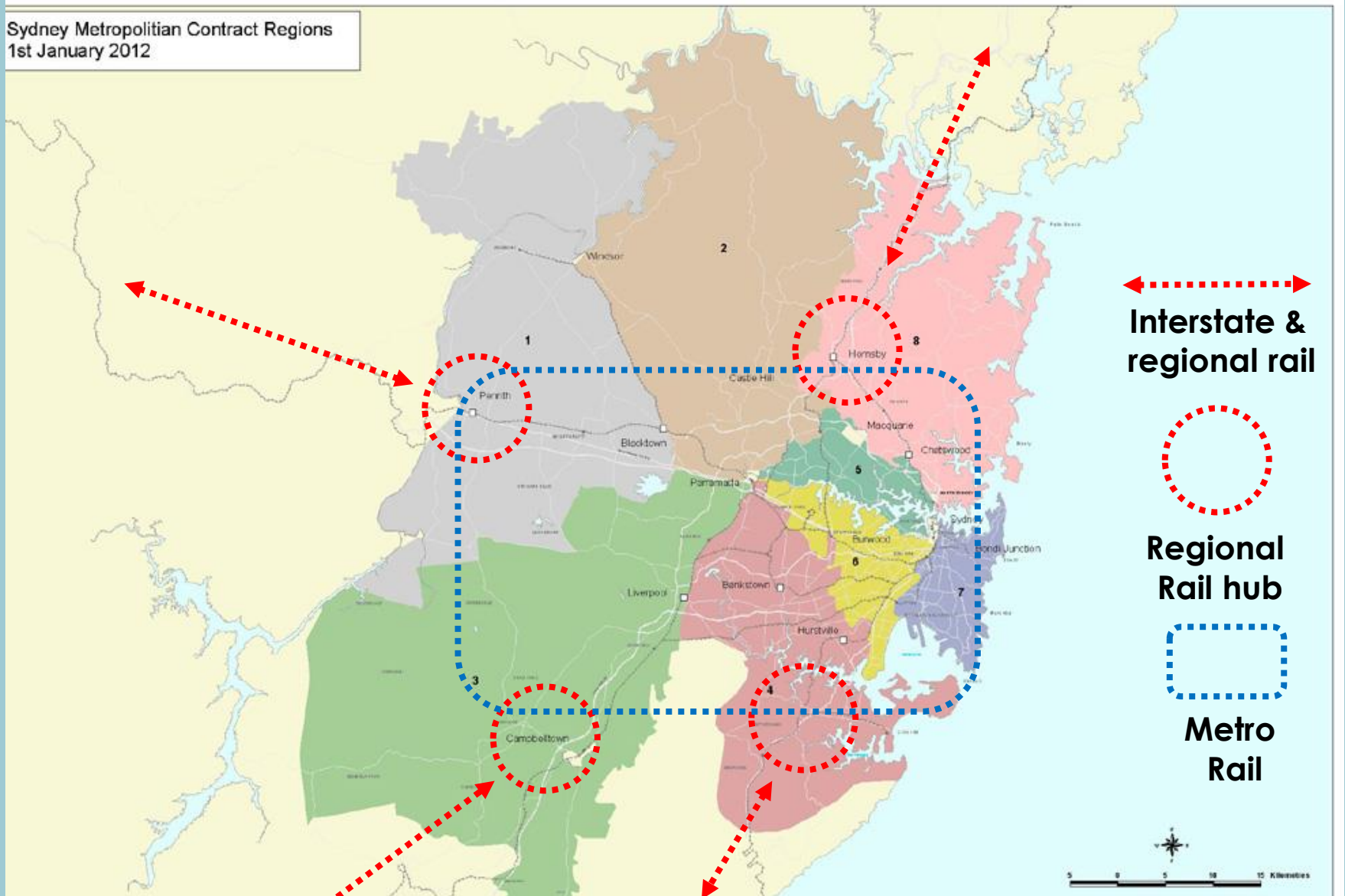


Sydney Metro May 2018 update

PIA 2018

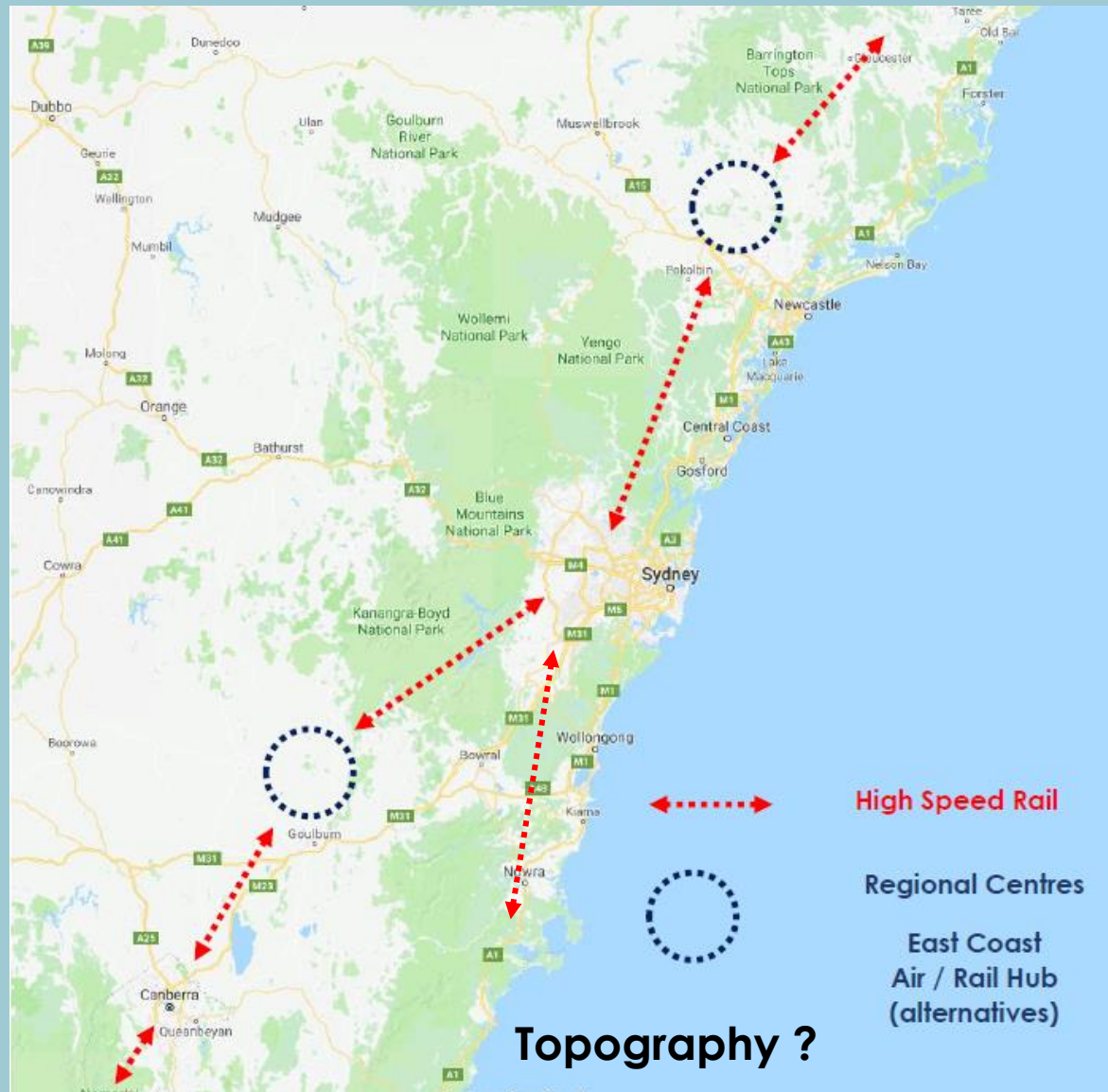
Potential Sydney Region rail strategy

Sydney Metropolitan Contract Regions
1st January 2012



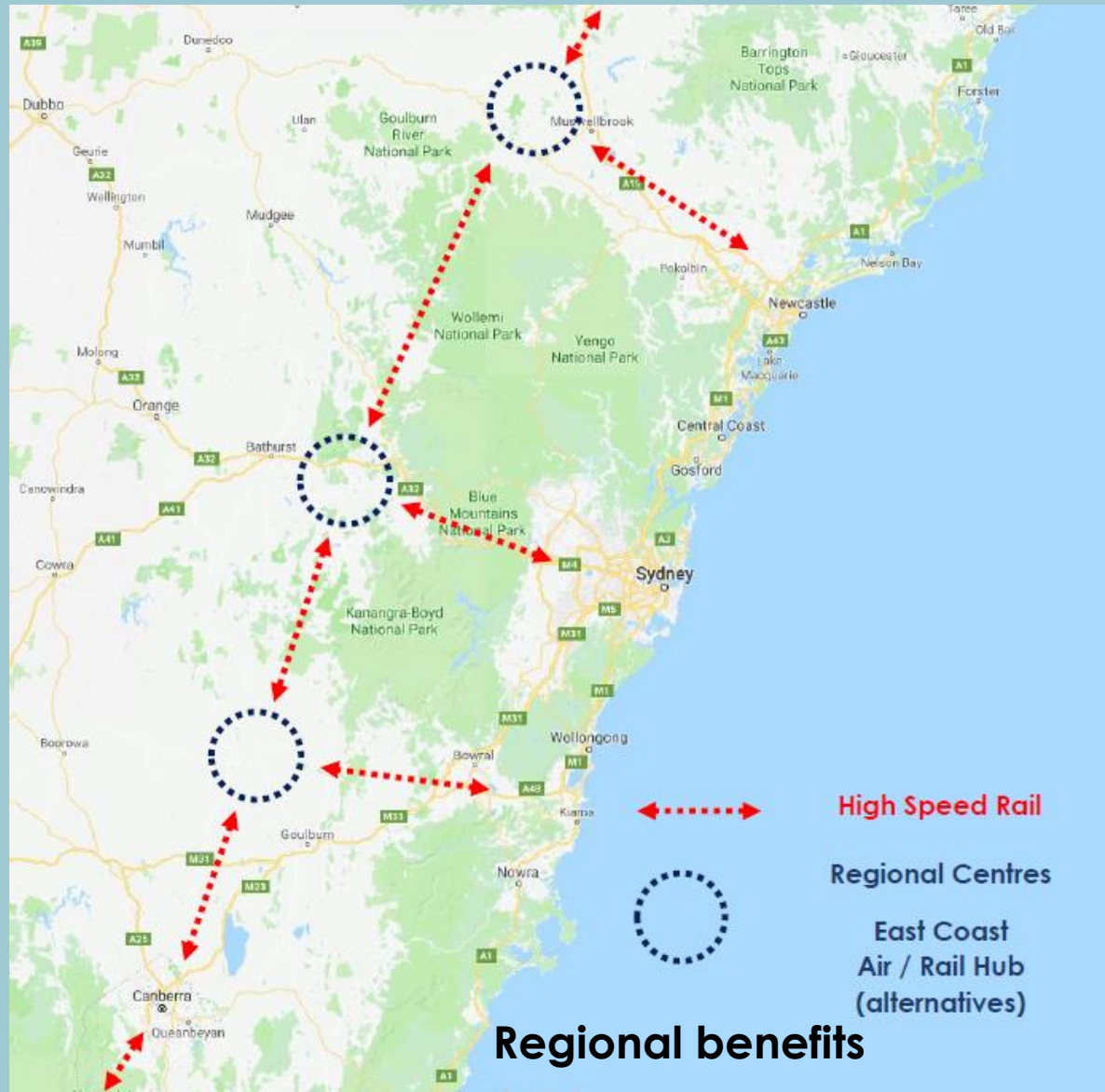
Potential Regional Strategy

Coastal HSR



Potential Regional Strategy

Regional HSR



Sydney in the Regional Context

Key issues

Land Use & Transport

Population & Density
Water & Quality of Life

Regional strategy

